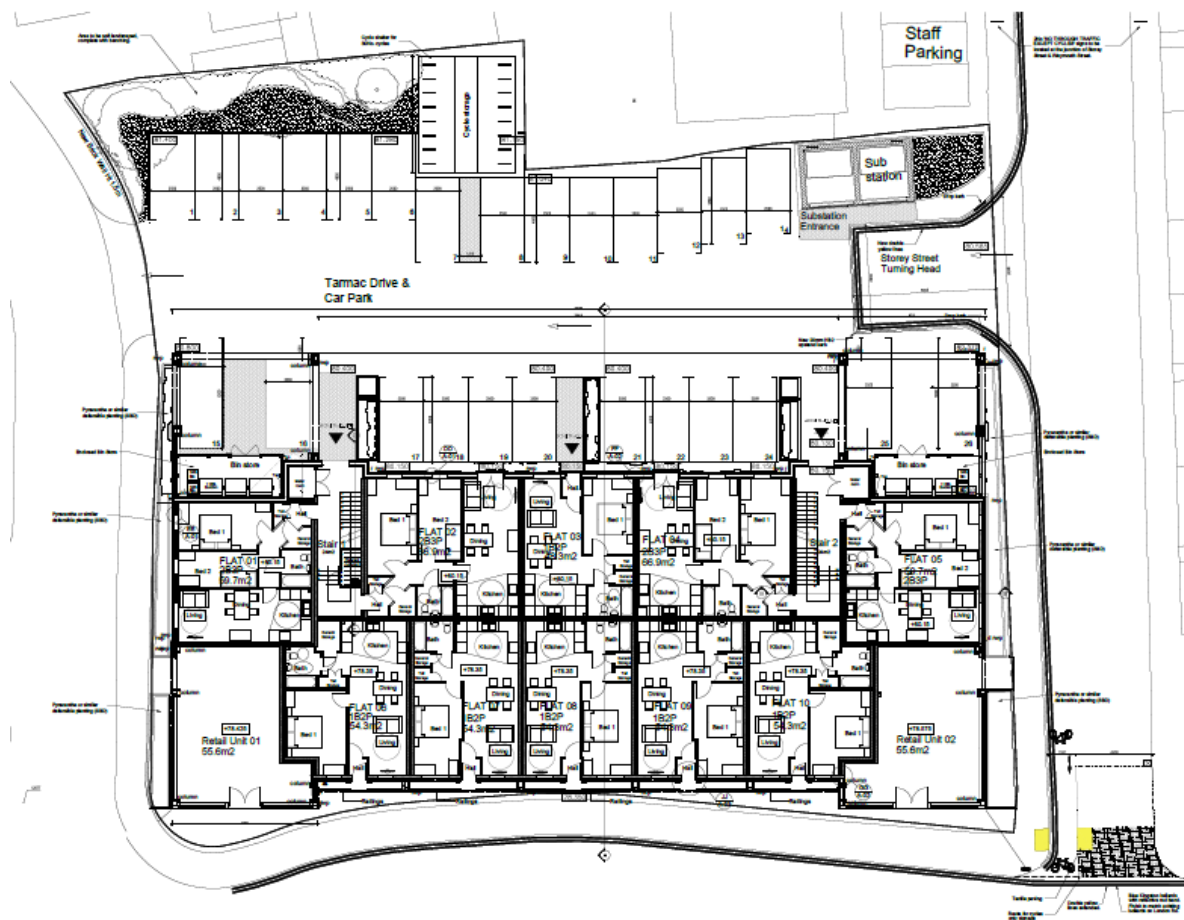


Item 5j

4/02741/15/ROC - VARIATION OF CONDITION 26 (APPROVED PLANS) AND CONDITION 23 (REFUSE STORAGE FACILITIES) ATTACHED TO PLANNING PERMISSION 4/01010/13/MFA (A MIXED USE DEVELOPMENT OF THE SITE TO CREATE 36 APARTMENTS, RETAIL FLOOR SPACE (CLASS A1) REPLACEMENT ELECTRICITY SUBSTATION AND ANCILLARY CAR PARKING AND LANDSCAPING.)

175-189, LONDON ROAD, APSLEY, HEMEL HEMPSTEAD, HP3 9SQ



Item 5j

4/02741/15/ROC - VARIATION OF CONDITION 26 (APPROVED PLANS) AND CONDITION 23 (REFUSE STORAGE FACILITIES) ATTACHED TO PLANNING PERMISSION 4/01010/13/MFA (A MIXED USE DEVELOPMENT OF THE SITE TO CREATE 36 APARTMENTS, RETAIL FLOOR SPACE (CLASS A1) REPLACEMENT ELECTRICITY SUBSTATION AND ANCILLARY CAR PARKING AND LANDSCAPING.)

175-189, LONDON ROAD, APSLEY, HEMEL HEMPSTEAD, HP3 9SQ



Item 5j

4/02741/15/ROC - VARIATION OF CONDITION 26 (APPROVED PLANS) AND CONDITION 23 (REFUSE STORAGE FACILITIES) ATTACHED TO PLANNING PERMISSION 4/01010/13/MFA (A MIXED USE DEVELOPMENT OF THE SITE TO CREATE 36 APARTMENTS, RETAIL FLOOR SPACE (CLASS A1) REPLACEMENT ELECTRICITY SUBSTATION AND ANCILLARY CAR PARKING AND LANDSCAPING.)

175-189, LONDON ROAD, APSLEY, HEMEL HEMPSTEAD, HP3 9SQ

