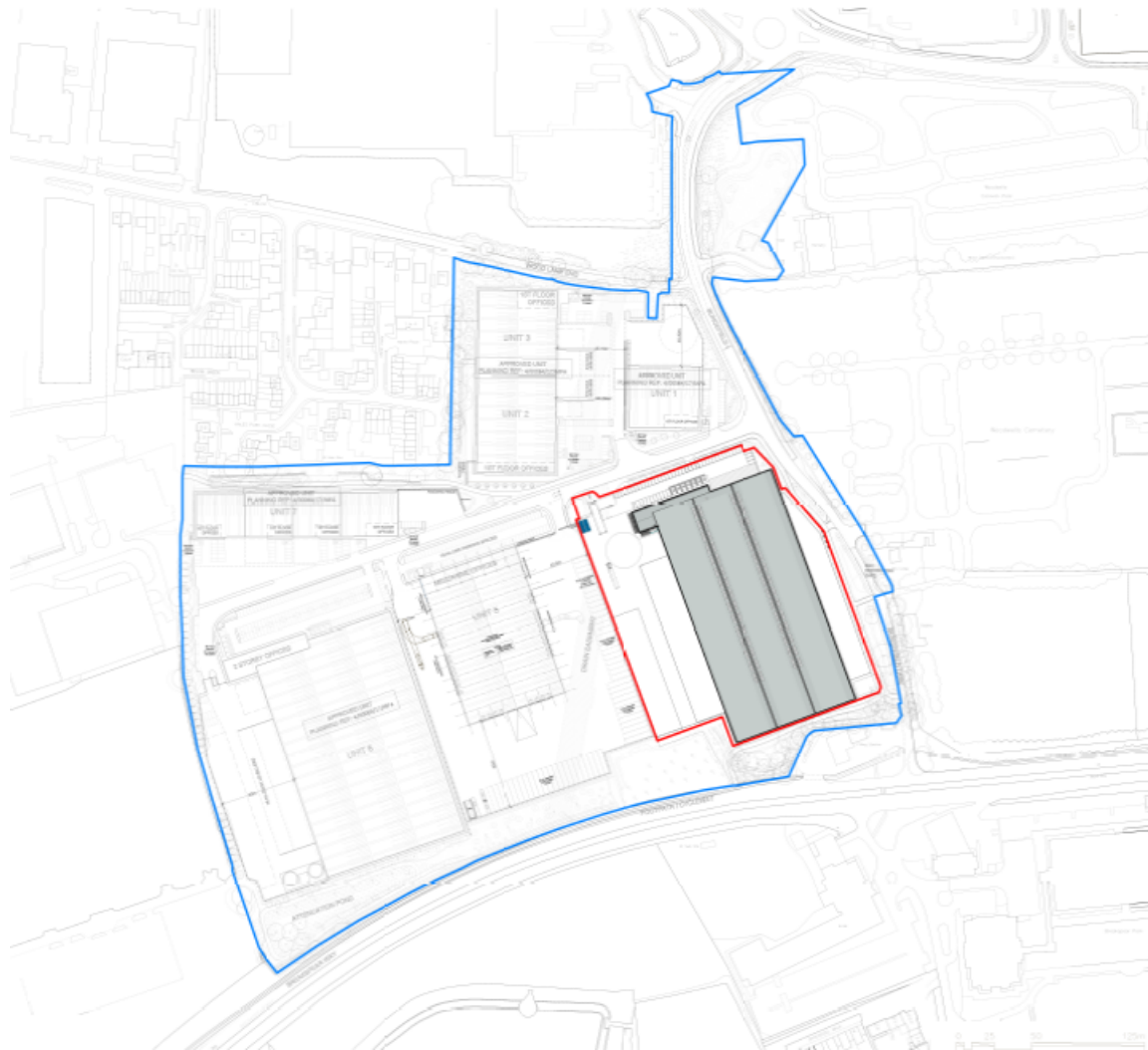


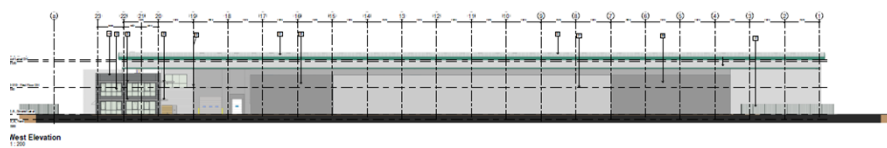
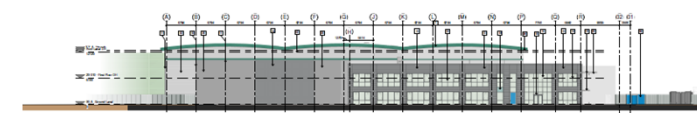
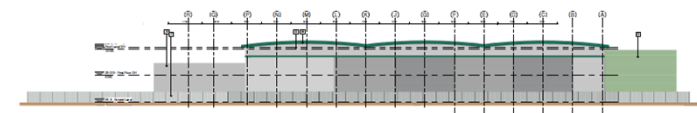
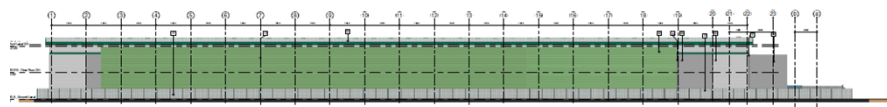
Item 5c 4/01116/19/ROC VARIATION OF CONDITIONS 12 (FLOOD RISK ASSESSMENT), 19 (CONSTRUCTION PHASE MITIGATION MEASURES), 20 (NOISE MITIGATION) AND 26 (APPROVED PLANS) ATTACHED TO PLANNING PERMISSION 4/00064/17/MFA (COMPREHENSIVE REDEVELOPMENT OF THE SITE TO PROVIDE 54,714 SQM OF FLEXIBLE COMMERCIAL FLOORSPACE WITHIN USE CLASSES B1C / B2 / B8 AND ANCILLARY OFFICES, TOGETHER WITH CAR AND CYCLE PARKING, ACCESS AND LANDSCAPING)

MAYLANDS GATEWAY, MAYLANDS AVENUE, HEMEL HEMPSTEAD



Item 5c 4/01116/19/ROC VARIATION OF CONDITIONS 12 (FLOOD RISK ASSESSMENT), 19 (CONSTRUCTION PHASE MITIGATION MEASURES), 20 (NOISE MITIGATION) AND 26 (APPROVED PLANS) ATTACHED TO PLANNING PERMISSION 4/00064/17/MFA (COMPREHENSIVE REDEVELOPMENT OF THE SITE TO PROVIDE 54,714 SQM OF FLEXIBLE COMMERCIAL FLOORSPACE WITHIN USE CLASSES B1C / B2 / B8 AND ANCILLARY OFFICES, TOGETHER WITH CAR AND CYCLE PARKING, ACCESS AND LANDSCAPING)

MAYLANDS GATEWAY, MAYLANDS AVENUE, HEMEL HEMPSTEAD



| Schedule of materials/finishes | |
|--------------------------------|---|
| 1 | External walls - Light grey concrete blockwork with light grey render |
| 2 | Internal walls - White plaster |
| 3 | Floors - Grey concrete |
| 4 | Roof - Grey metal cladding |
| 5 | Windows - Grey frame, double glazing |
| 6 | Doors - Grey frame, double glazing |
| 7 | Landscaping - Green grass, trees, shrubs |
| 8 | Access - Grey concrete |
| 9 | Other - Grey concrete |

