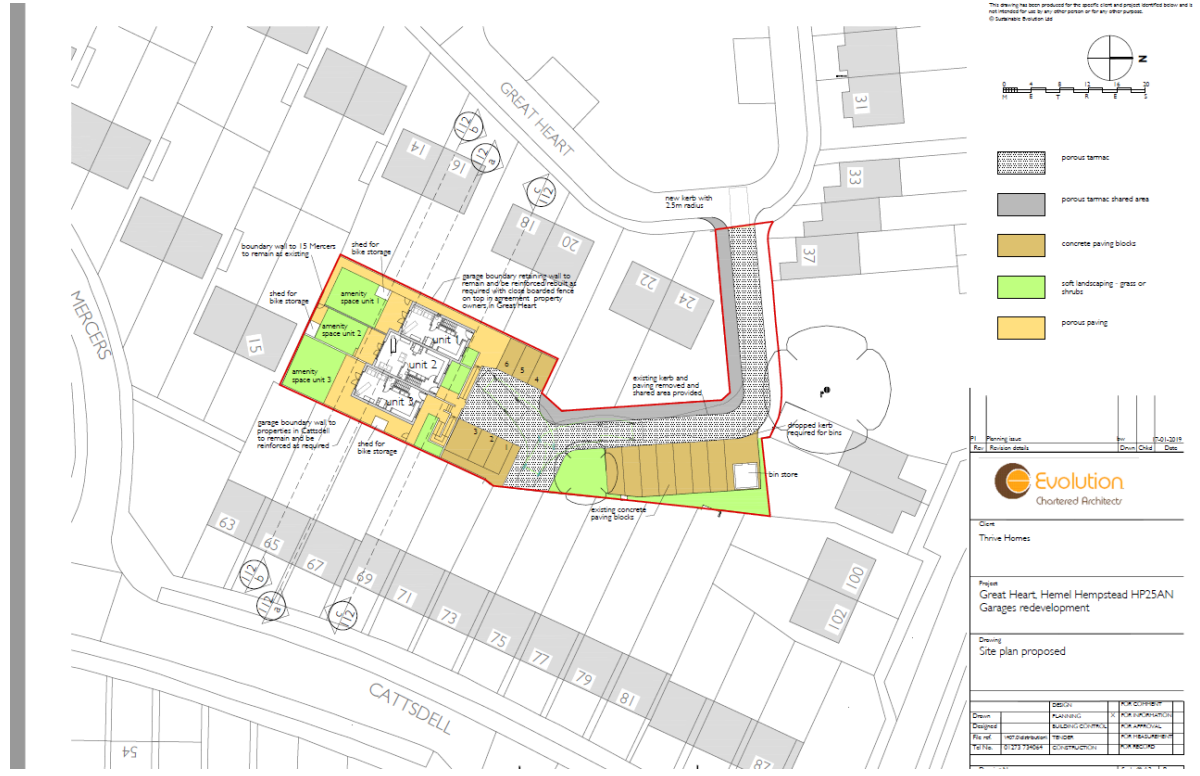


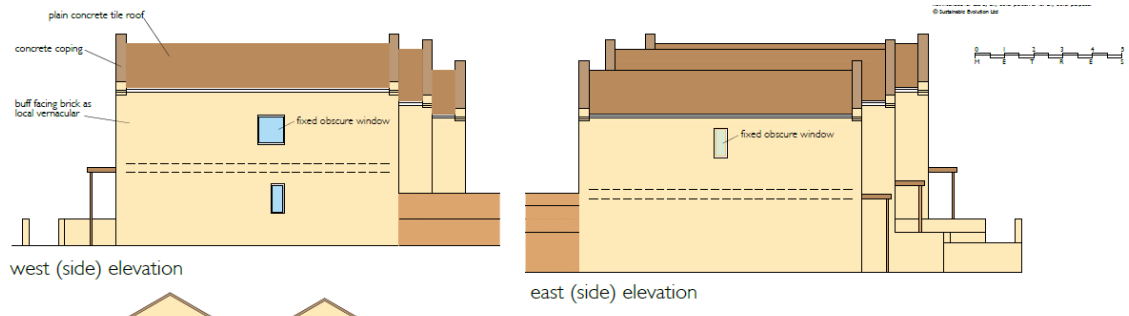
Item 5d 4/00628/19/FUL DEMOLITION OF GARAGES AND CONSTRUCTION OF TWO 2-BEDROOM HOUSES AND ONE 1-BEDROOM HOUSE AND ASSOCIATED PARKING AND LANDSCAPING, REFUSE AND RECYCLING BIN STORE AND DRAINAGE WORKS.

GARAGE SITE, GREAT HEART, HEMEL HEMPSTEAD



Item 5d 4/00628/19/FUL DEMOLITION OF GARAGES AND CONSTRUCTION OF TWO 2-BEDROOM HOUSES AND ONE 1-BEDROOM HOUSE AND ASSOCIATED PARKING AND LANDSCAPING, REFUSE AND RECYCLING BIN STORE AND DRAINAGE WORKS.

GARAGE SITE, GREAT HEART, HEMEL HEMPSTEAD

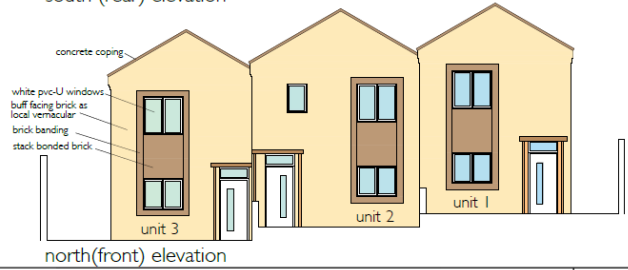


west (side) elevation

east (side) elevation



south (rear) elevation



north(front) elevation

PL	Planning level	Rev	17-01-2019
PI	Colour added	Rev	Jan 2019
Rev	Revision details	Drawn/Check	Date
Client Thrive Homes			
Project Great Heart, Hemel Hempstead HP25AN Garages redevelopment			
Drawing Proposed elevations			
Drawn	DESIGN	CHK/DATE/REV	
Designer	PLANNING	CHK/DATE/REV	
File ref	407-00628/19-FUL	CHK/DATE/REV	
Tel No.	01296 254654	CHK/DATE/REV	
Drawing No	407-114	Scale 1:100	Rev P2