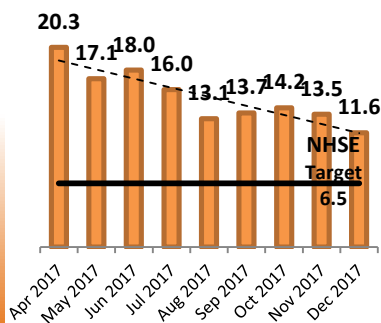


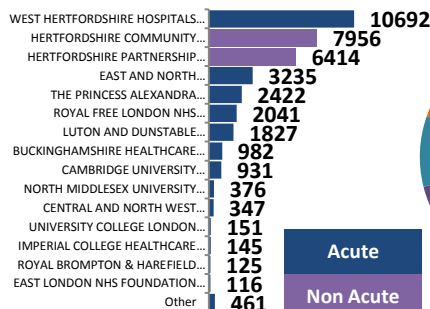
This publication is based on UNIFY published data up to the end of December 2017. This analysis has been produced to support Hertfordshire's quarterly delayed transfers of care performance for 2017-18.

Total Delays

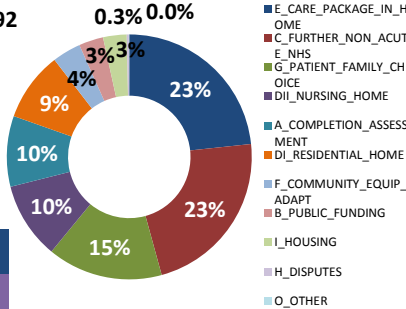
Total Delays Per 100k Monthly Trend Vs NHSE Target



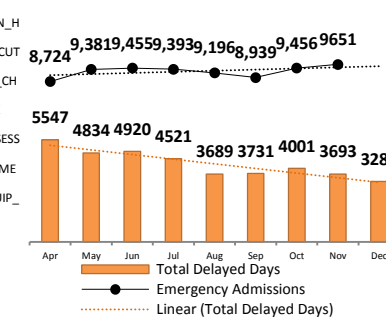
Total Delays Split by Trust (actual delayed days) for the year to date



Total Delays Split By Reason (Actual Delayed Days) for the year to Date



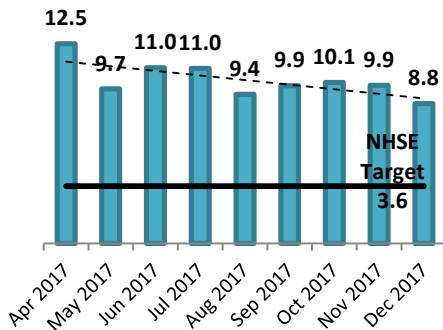
Hertfordshire Emergency Admissions (65+) Vs Delayed Transfers of care



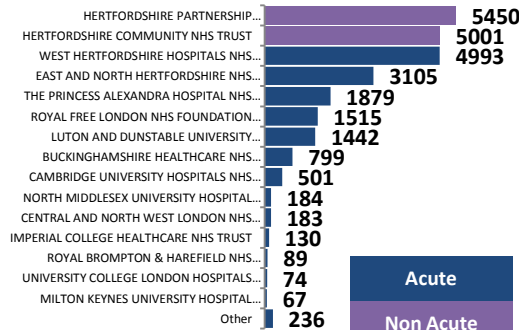
Total Delays	Hertfordshire DTOC Ranking (Change over time)		
	Hertfordshire National Ranking (Out of 151)	Hertfordshire CIPFA Ranking (Out of 15)	Hertfordshire Eastern Ranking (Out of 11)
April	137	11	11
May	129	9	11
June	128	9	11
July	121	7	10
August	95	5	8
September	102	5	8
October	110	7	8
November	109	8	8
December	104	5	8
Rank Year to Date	118	6	10

NHS Delays (67% of all Delays)

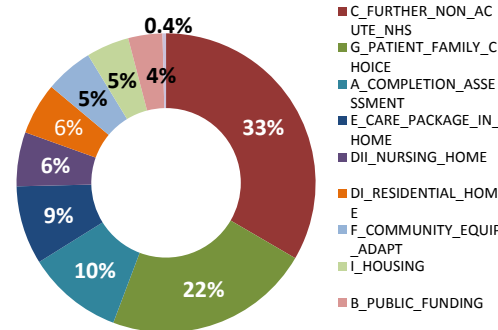
NHS Delays Per 100k Monthly Trend Vs NHSE Target



NHS Delays Split by Trust (actual delayed days) for the year to date



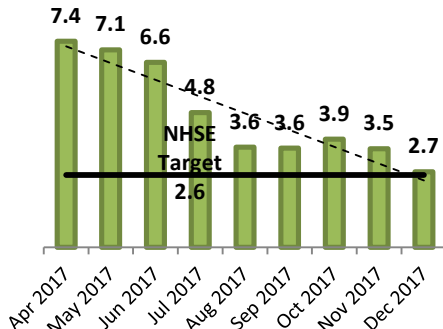
NHS Delays Split By Reason (Actual Delayed Days) for the year to Date



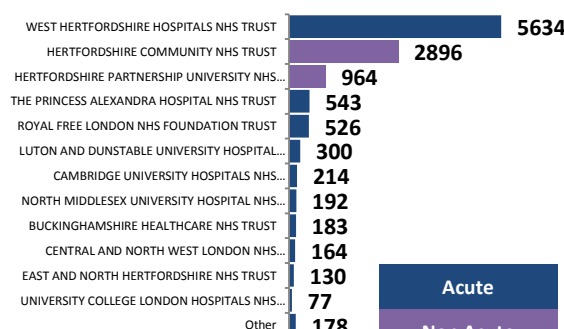
NHS Delays	Hertfordshire DTOC Ranking (Change over time)		
	Hertfordshire National Ranking (Out of 151)	Hertfordshire CIPFA Ranking (Out of 15)	Hertfordshire Eastern Ranking (Out of 11)
April	140	12	10
May	126	11	10
June	129	13	10
July	129	11	10
August	119	10	9
September	122	11	8
October	127	12	10
November	131	10	9
December	127	11	8
Rank Year to Date	126	9	9

Social Care (31% of all Delays)

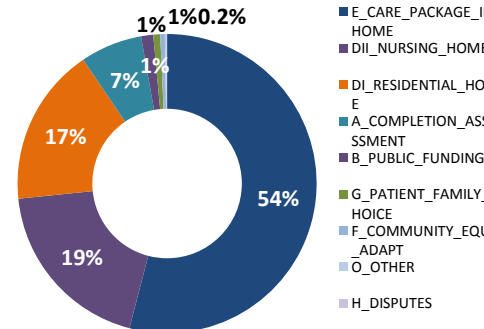
Social Care Delays Per 100k Monthly Trend Vs NHSE Target



Social Care Delays Split by Trust (actual delayed days) for the year to date



Social Care Delays Split By Reason (Actual Delayed Days) for the year to Date



Social Care Delays	Hertfordshire DTOC Ranking (Change over time)		
	Hertfordshire National Ranking (Out of 151)	Hertfordshire CIPFA Ranking (Out of 15)	Hertfordshire Eastern Ranking (Out of 11)
April	122	10	11
May	129	11	11
June	116	9	11
July	99	5	7
August	77	2	7
September	84	3	8
October	94	7	8
November	94	5	7
December	85	6	7
Rank Year to Date	107	7	8