

Item 5i

4/02269/17/MFA DEMOLITION OF 20 GARAGES AND CONSTRUCTION OF NINE TWO-BED AND TWO ONE-BED DWELLINGS IN TWO BUILDINGS WITH LANDSCAPING, BIN STORE AND CYCLE STORE AND 16 PARKING SPACES

LAND NORTH EAST OF 25, GOLDCROFT, HEMEL HEMPSTEAD



Item 5i

4/02269/17/MFA DEMOLITION OF 20 GARAGES AND CONSTRUCTION OF NINE TWO-BED AND TWO ONE-BED DWELLINGS IN TWO BUILDINGS WITH LANDSCAPING, BIN STORE AND CYCLE STORE AND 16 PARKING SPACES

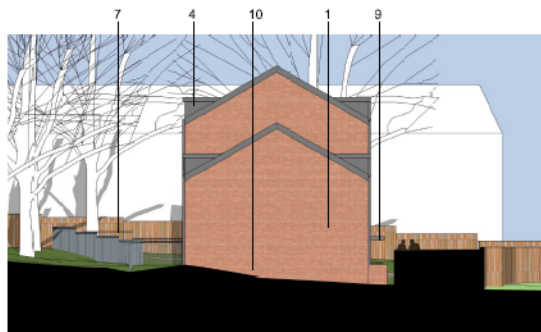
LAND NORTH EAST OF 25, GOLDCROFT, HEMEL HEMPSTEAD



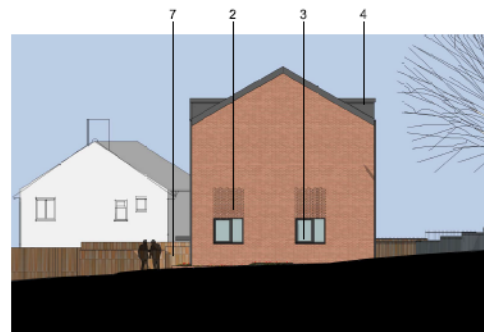
A, Building A North West Facade Scale 1:100 @A1



B, Building A South East Facade Scale 1:100 @A1



C, Building A South West Facade Scale 1:100 @A1



D, Building A North East Facade Scale 1:100 @A1

Item 5i

4/02269/17/MFA DEMOLITION OF 20 GARAGES AND CONSTRUCTION OF NINE TWO-BED AND TWO ONE-BED DWELLINGS IN TWO BUILDINGS WITH LANDSCAPING, BIN STORE AND CYCLE STORE AND 16 PARKING SPACES

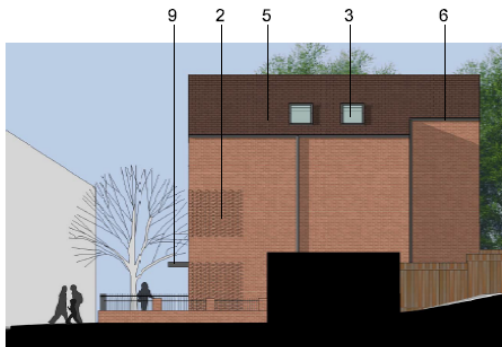
LAND NORTH EAST OF 25, GOLDCROFT, HEMEL HEMPSTEAD



E. Building B South East Facade Scale 1:100 @A1



F. Building B North West Facade Scale 1:100 @A1



G. Building B North East Facade Scale 1:100 @A1



H. Building B South West Facade Scale 1:100 @A1