



**Love Your Neighbourhood**  
**Woodhall Farm East Consultation July 2013**



## Contents

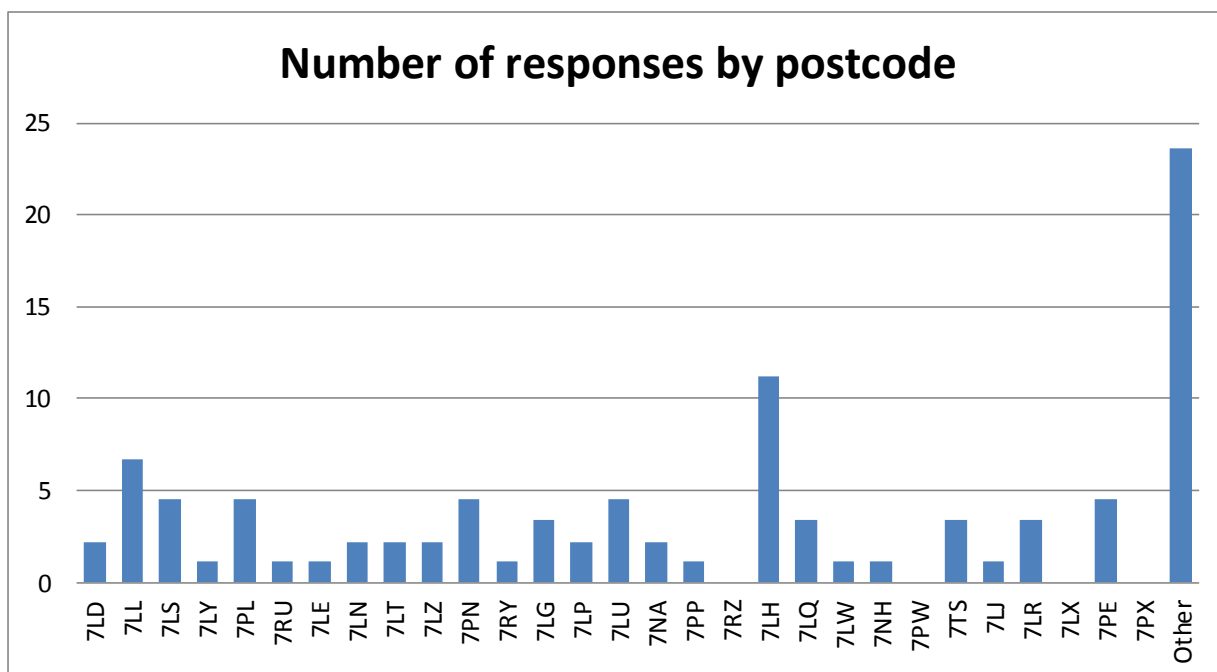
<b>Page 2</b>	Q.1 Please tell us your postcode
<b>Page 3</b>	Q.2 Overall, how satisfied or dissatisfied are you with your area as a place to live?  Q.3 Thinking about where you live, which, if any of the below do you think needs improving? (please select top three priorities only)
<b>Page 4</b>	Q.4 Please tell us why you consider your top three priorities from Q3 need improving  Q.5 Thinking about your area, how satisfied or dissatisfied are you with each of the following services?
<b>Page 5</b>	Q.6 Thinking about your area, how much of a problem do you think each of the following are?
<b>Page 6</b>	Q.7 Please tell us what you like about your area:  Q.8 Is there Anything else you would like to tell us about living in your area? (Please note this question is intended to help us understand the needs of residents in the area. We will not be able to respond to you individually).
<b>Page 7</b>	Q.9 If you are interested in any of the following opportunities, please select all that apply
<b>Appendices</b>	

## Woodhall Farm East Consultation Results

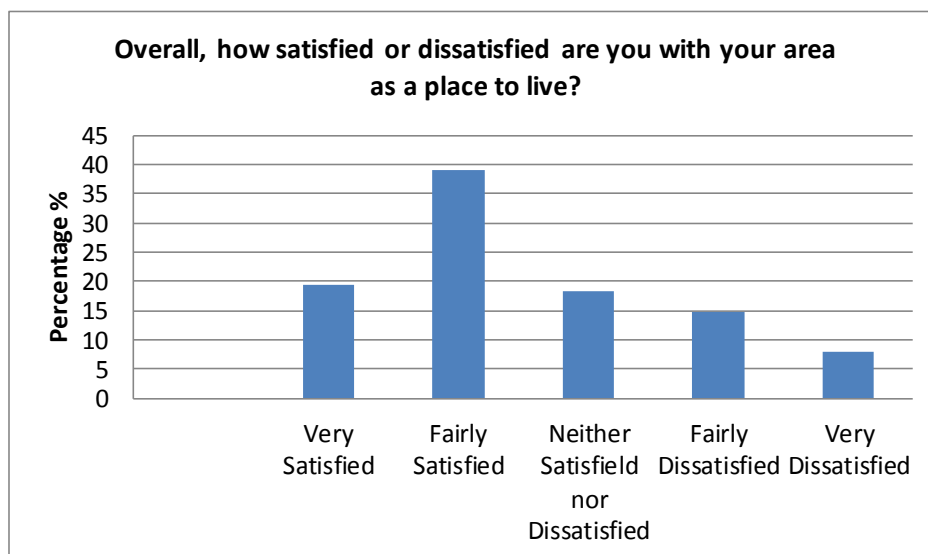
89 surveys were completed between 25 June 2013 and 25 July 2013. 32 completed on line and 57 paper versions.

The results from this consultation will be used to inform different departments within the Council and external agencies of the views of residents in Woodhall Farm East.

### Q1.



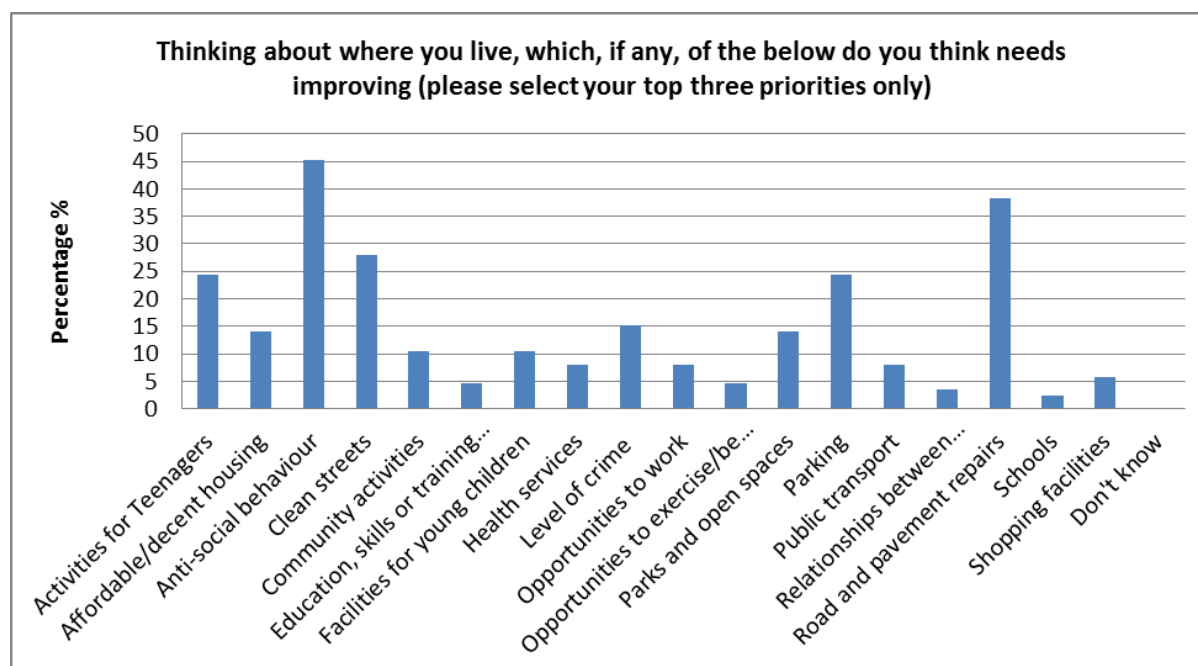
## Q2.



The majority 59% are very (20%), or fairly (39%) satisfied with the area. 18% are neither satisfied nor dissatisfied and 23% are fairly (15%) or very (8%) dissatisfied.

## Q.3

Thinking about where you live which, if any, of the below do you think needs improving?



See Appendix 1 for literal responses

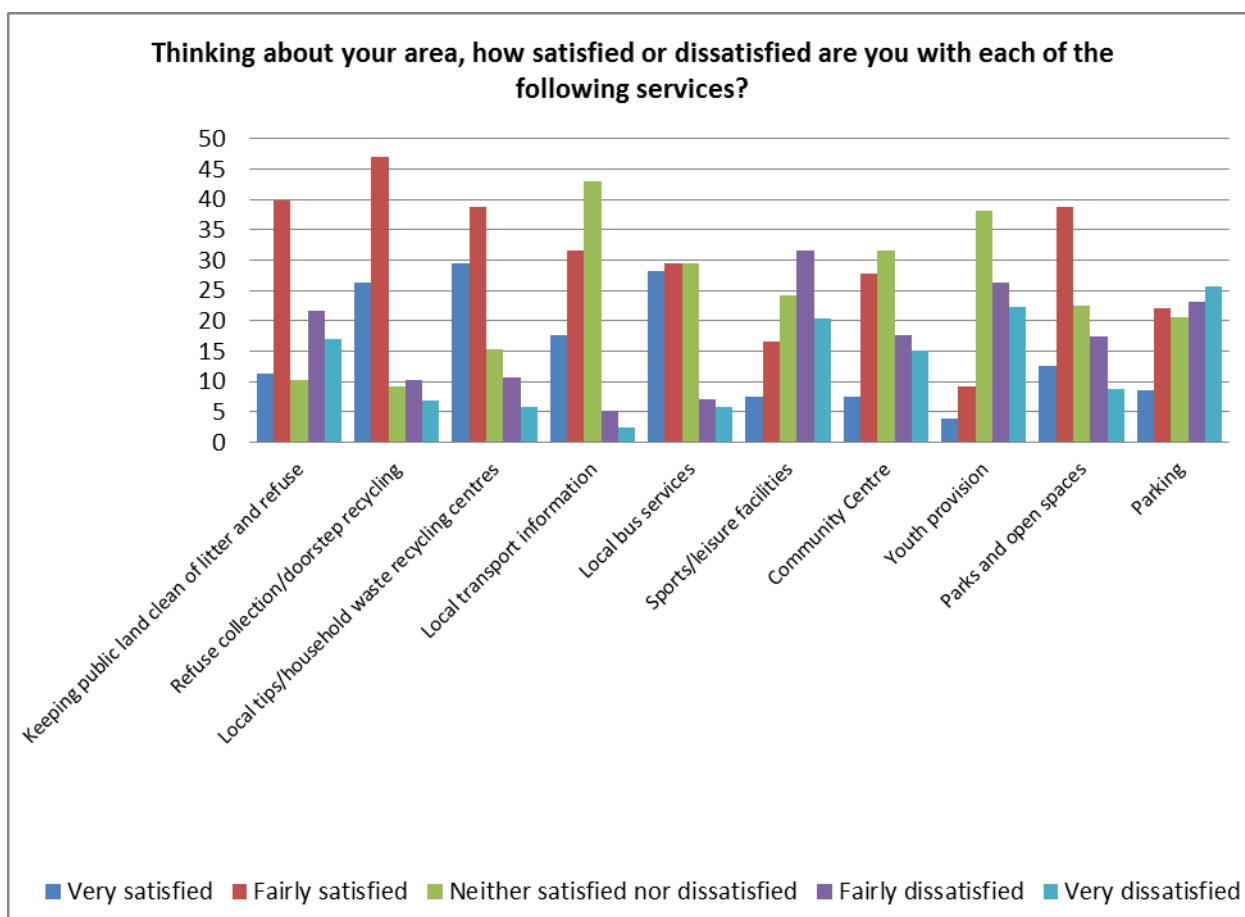
#### Q.4

Please tell us why you consider your top 3 priorities from Q.3 need improving. Please write the name of each priority in the box with your explanation.

See Appendix 2 for Literal responses

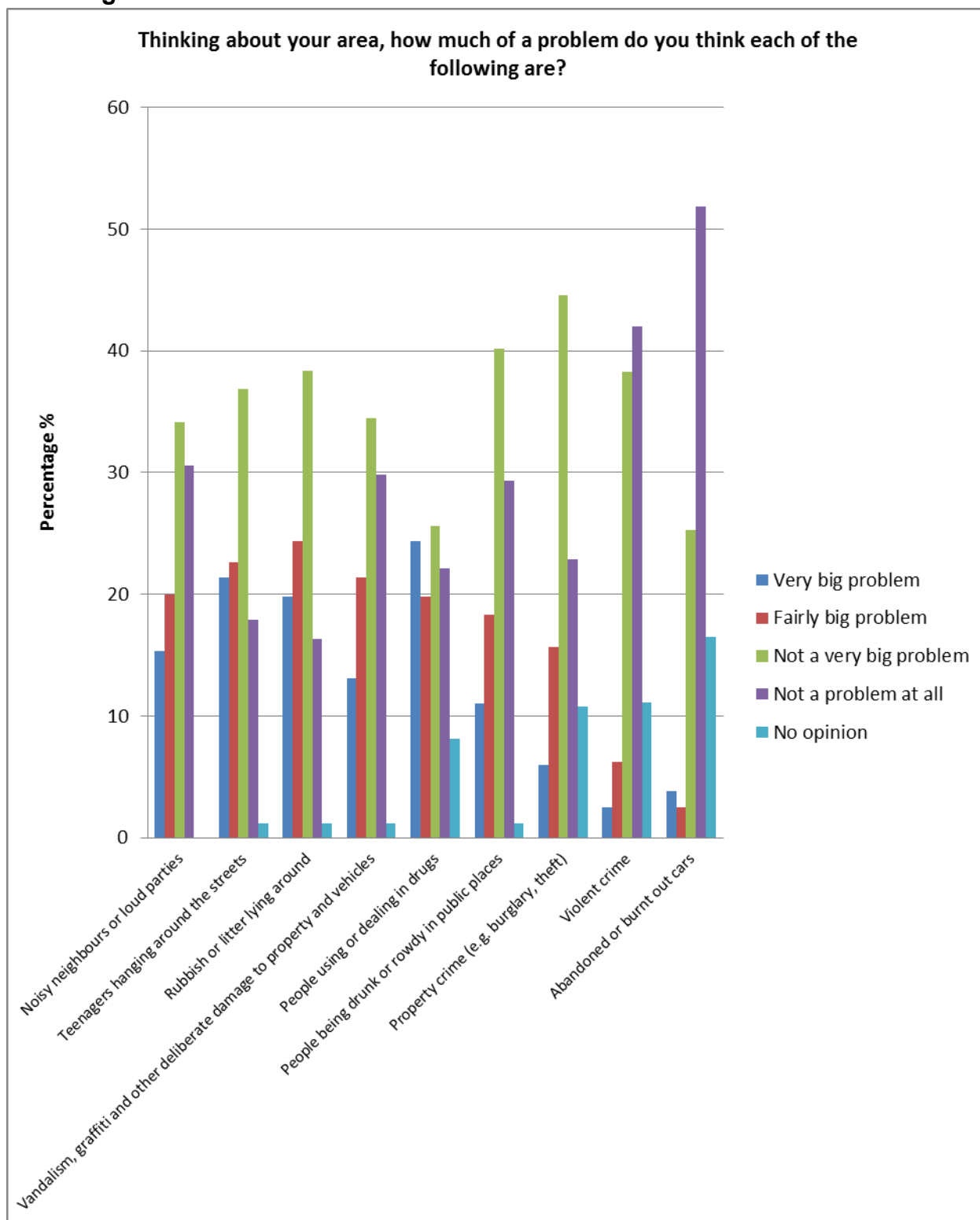
#### Q.5

Thinking about your area, how satisfied or dissatisfied are you with each of the following services?



See Appendix 3 for Literal responses

**Q.6 Thinking about your area, how much of a problem do you think each of the following are?**



**Q.7**

**Please tell us what you like about your area:**

**See Appendix 4 for literal responses**

**Q.8**

**Is there anything else you would like to tell us about living in your area?  
(Please note this question is intended to help us understand the needs of  
residents in the area. We will not be able to respond to you individually)**

**See Appendix 5 for literal responses**

**Q.9**

**If you are interested in any of the following opportunities, please select all that apply**

