



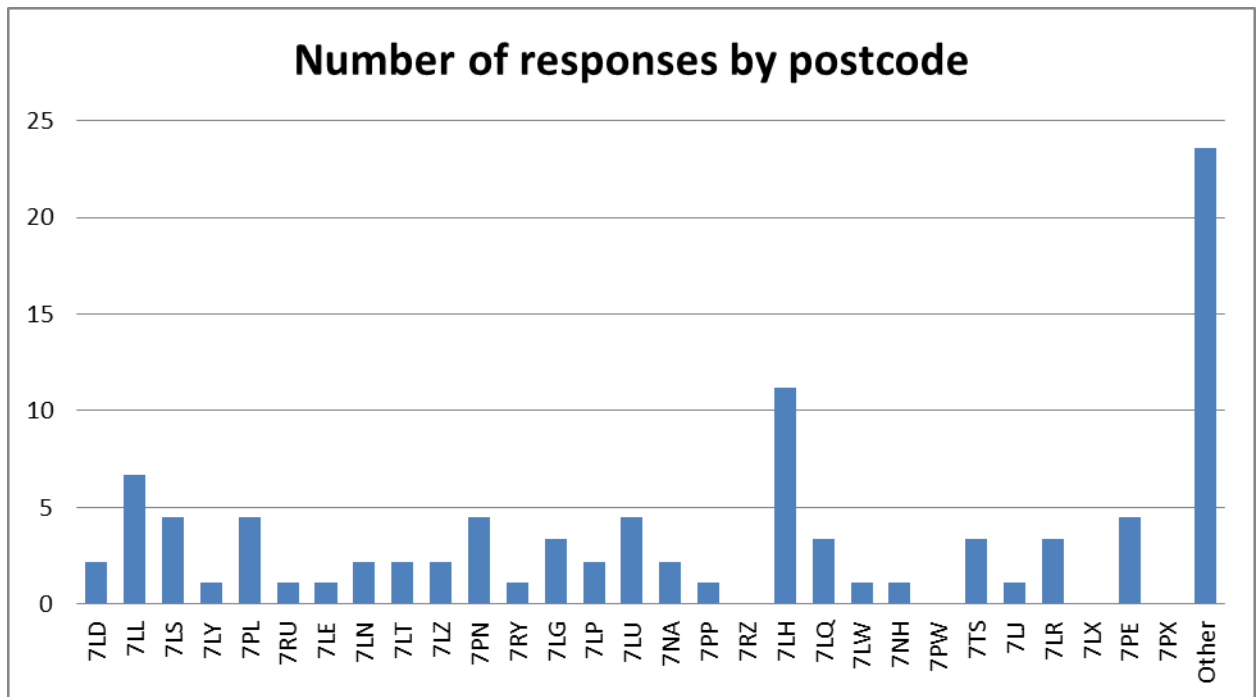
**Love Your Neighbourhood**  
**Woodhall Farm 2013**  
**Results and summary**  
**of our resident survey**



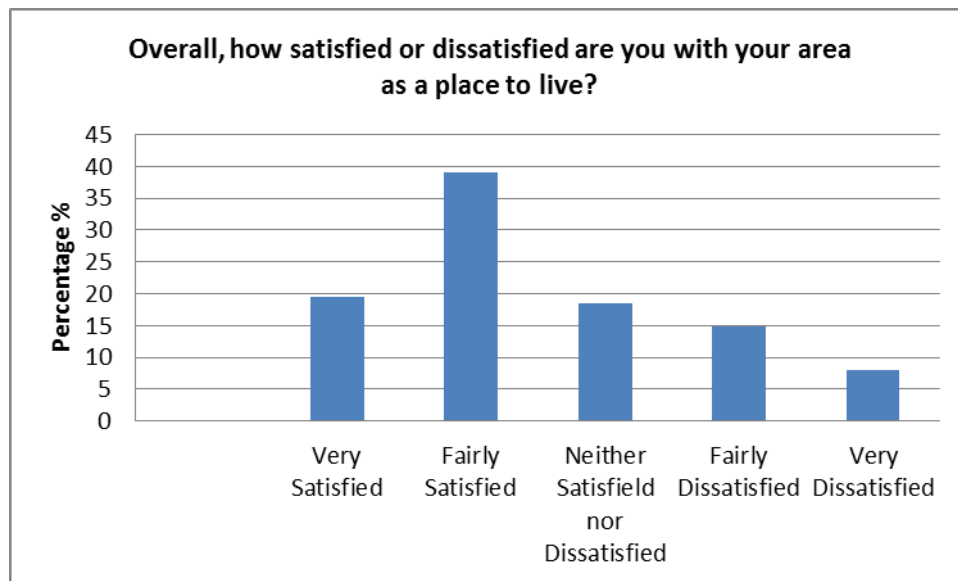
89 surveys were completed between 25 June 2013 and 25 July 2013. 32 completed on line and 57 paper versions.

The results from this consultation will be used to inform different departments within the Council and external agencies of the views of residents in Woodhall Farm East.

Q1.



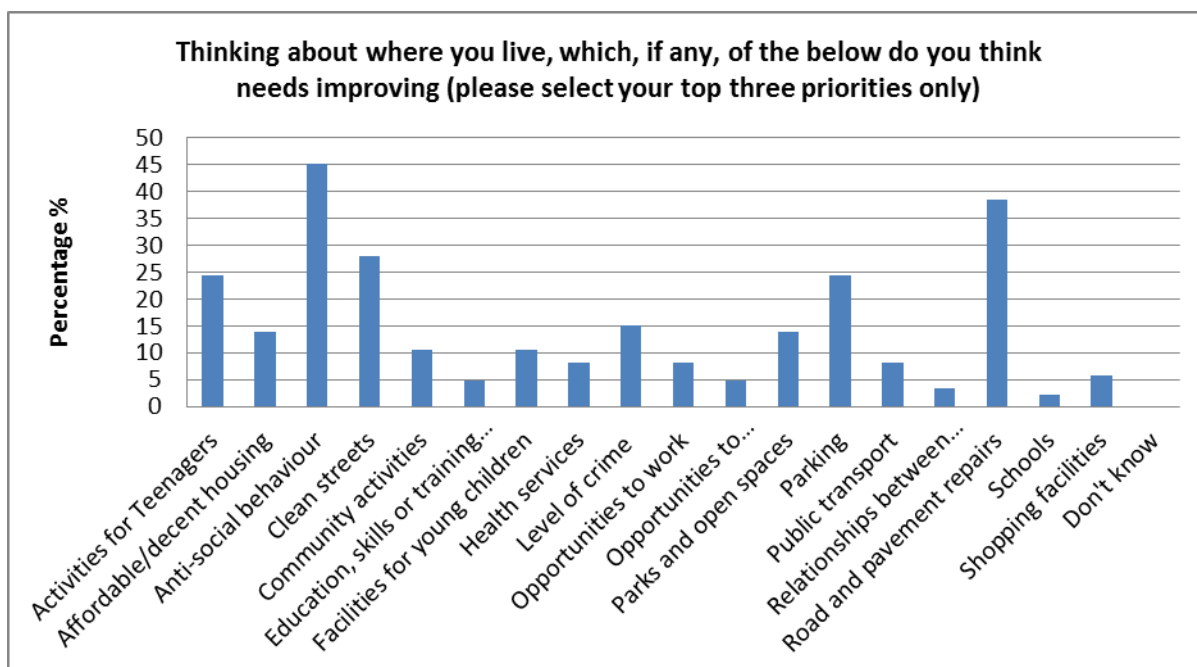
Q2.



The majority 59% are very (20%), or fairly (39%) satisfied with the area. 18% are neither satisfied nor dissatisfied and 23% are fairly (15%) or very (8%) dissatisfied.

### Q.3

Thinking about where you live which, if any, of the below do you think needs improving?



### Q.4

Please tell us why you consider your top 3 priorities from Q.3 need improving. Please write the name of each priority in the box with your explanation.

#### Priority 1 – Anti-social behaviour

- Loud music/noisy/shouting
- Neighbours
- Taking and dealing drugs
- Graffiti
- Vandalism
- Youths hanging around at day and night
- Car break ins and burglary

#### Priority 2 – Roads and Pavements

- Pavements uneven
- Take bumps out of Shenley Road and replace with speed cameras
- Holes in road

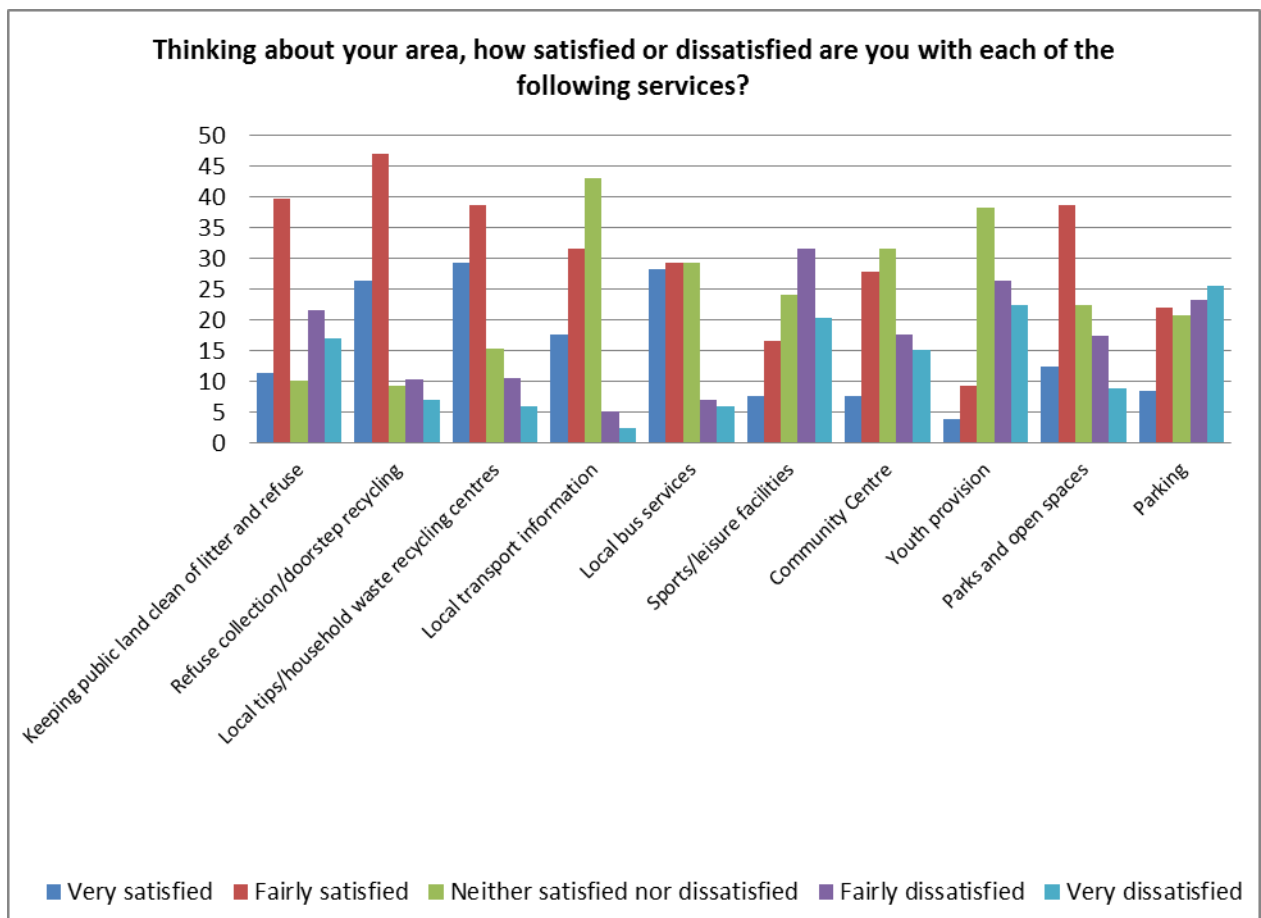
#### Priority 3 – Clean Streets

- More bins needed
- Dog fouling
- Rubbish everywhere
- Communal bins need re-gating

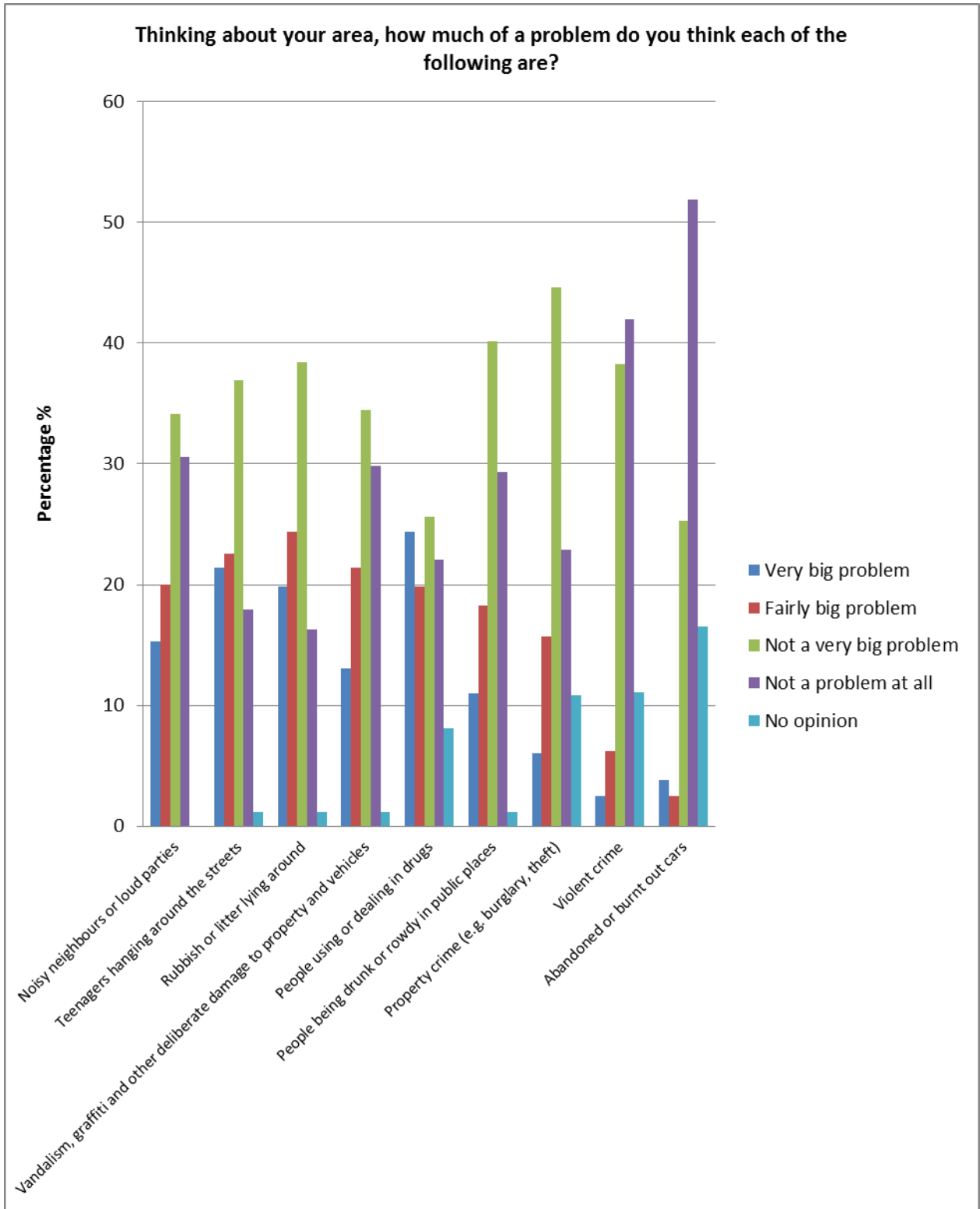
- Gutter full of grass and rubbish
- Dog poo everywhere

**Q.5**

**Thinking about your area, how satisfied or dissatisfied are you with each of the following services?**



**Q.6 Thinking about your area, how much of a problem do you think each of the following are?**



**Please tell us what you like about your area:**

**Some of the responses;**

- **Family run shop**
- **Close to countryside**
- **Quiet**
- **Love the park**
- **Convenient for the M1**
- **Shopping centre**
- **Schools, doctors nearby**
- **Good transport links**
- **Friendly**
- **Good neighbours**

**Q.8**

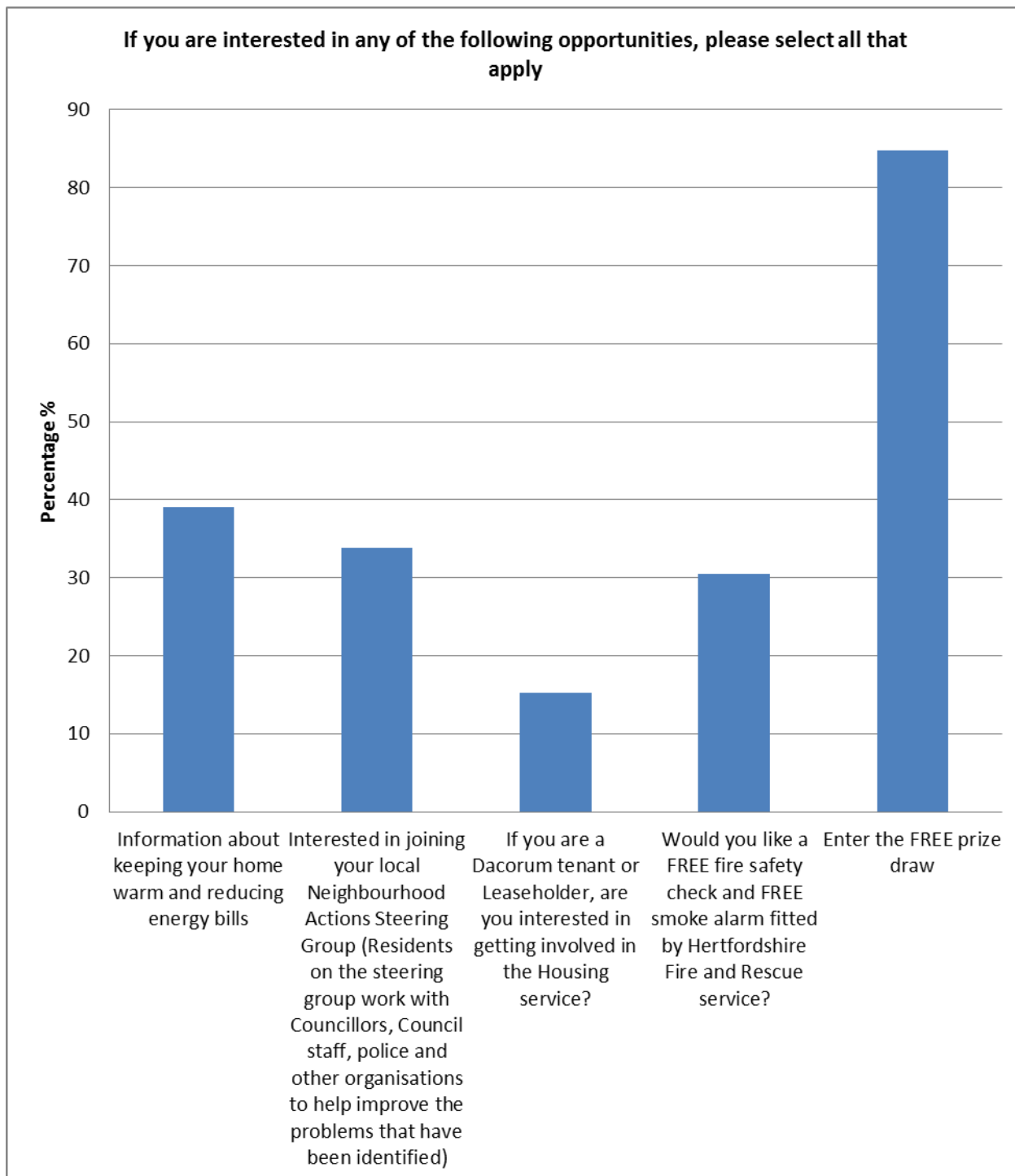
**Is there anything else you would like to tell us about living in your area?  
(Please note this question is intended to help us understand the needs of residents in the area. We will not be able to respond to you individually)**

**Some of the responses;**

- **A pub would be nice or community centre club**
- **More information on how the community centre is used**
- **Don't like the area at all**
- **No café**
- **Park needs more things for younger children**
- **No recycling facilities**
- **More parking needed**
- **Street light back on at night**
- **More activities for youth**
- **Disused concrete area between Cleves and Aragon could be used for washing lines**
- **Generally a nice place to live**
- **More dog poo bins**

### Q.9

If you are interested in any of the following opportunities, please select all that apply



## Summary

Thank you for completing the consultation, it really does help us understand what you do and do not like about the area in which you live.

Please see table below to see how we have started to address your concerns;

<b>You said</b>	<b>We did..</b>
There is lots of anti-social behaviour in the area	A meeting was held between Kim Ashworth our anti-social behaviour officer, local police, councillors, school head teacher and housing association representative on 2 December. We also delivered letters to 857 properties in December and early January inviting residents to attend any one of two, one hour long "Drop In" sessions which were held on 10 <sup>th</sup> January at Brockwood School at 9am and 3pm. Various issues were raised and these have now been dealt with. Police stats show that ASB is down by 34.5% in the Woodhall Ward in comparison to the same time last year.
Streets are full of litter	Arranged a community litter pick for March through the Neighbourhood Action Group
The waste area between Cleves Road and Aragon Close – can we have this made into a drying area?	Our Housing Asset team will look at this request as part of their Estate Improvement project.
<b>You said...</b>	<b>Did you know...</b>
You need more dog poo bins	..you can now dispose of dog poo in your household bin and normal public bins?
Lots of graffiti around the estate	.. you can report graffiti on 01442 228000 and ask for Clean, Safe and Green? For occurrences that are our responsibility, we endeavour to: <ul style="list-style-type: none"> <li>• Clear racist/offensive graffiti within one working day (this is dependent on whether the Police require it for evidence).</li> <li>• Clear all non-racist/offensive graffiti within seven working days.</li> </ul>
You need more recycling bins	..if you think your area will benefit from recycling bins please email <a href="mailto:cleansafegreen@dacorum.gov.uk">cleansafegreen@dacorum.gov.uk</a> or telephone 01442 228000 and ask for Waste Services

This is not just a one off! We fully intend to work with the Neighbourhood Action Group throughout the year to work with residents to improve the area and make it a nicer place to live.

\*If you would like to join or find out more information about the Neighbourhood Action Group please email [neighbourhood.action@dacorum.gov.uk](mailto:neighbourhood.action@dacorum.gov.uk).