

Why Customers Choose Us

Local Presence – We have two full time engineers working from our base in Calne and a number of operatives to call on in the event of cover being required.

Contract Management – We operate toilets for more than eighty Local Authorities from Cornwall to Aberdeen. Our aim is to reduce costs and improve service.

Experience – We have managed toilets for more than twenty years and have encountered the majority of issues that will arise around toilets.

Flexibility – Healthmatic is a dynamic business which will react to new requirements and specifications not by digging our heels in, but by discussing and planning your future needs.

Installation experience – We have installed over 350 separate Toilet blocks throughout the UK and Ireland, and with our European partners, over 1500 across Europe. The vast majority of these have been in Parks, City and Town Centre's and Transport Termini.

Customer Service – Our staff are committed to providing the best customer care. We have very short communication lines, and any problems are immediately alerted to senior managers.

National Coverage - Healthmatic has engineers based throughout the UK and Ireland. We have a number of roving engineers who cover in the event of illness and holiday.

Why employ this toilet & operations package

1. The toilet will be installed quickly and efficiently by a team who have installed over 350 toilet blocks across the UK.
2. The combination of efficient use of materials and the application of technology will mean that this toilet provides excellent value for money to both the buyer and user. The Buyer has the option between Capital Purchase or Rental and can tailor their choice to their budget.
3. For most operations managers, the toilets are a source of constant irritation and problems. Our aim is for the toilets to become silent partners in providing quality service to the Public. We will deal with all problems quickly and efficiently, keeping you informed throughout.
4. We will employ a local person to help clean and manage the toilets for us. We don't have legions of employees driving round in vans; most of our cleaners live within walking distance of their toilet. This gives "local ownership" to the cleaner and accountability to the users.
5. This toilet will last a minimum of twenty years if properly maintained. The building is based on a steel frame, clad in brick or stone (as specified) and insulated to the highest BS standards.
6. In the event of absence by our local employee, our National coverage means that our local engineer will never be far away. We will give you as much or as little information as you require and will tailor this to your requirements.



Key Benefits of a Healthmatic Semi Automatic Toilet

Management

- The toilet will lock and unlock at specified times, meaning no costly opening/closing routines.
- The toilet will flush as the user exits if they fail to flush it themselves.
- The user is limited to 15 minutes, at which point the interior alarm will sound and door unlock
- All parts used are highly vandal resistant, but aim to be user friendly as well.

Direct Access

- With access to the cubicle direct from the Pavement, savings are made on the cleaning, heating and “vandal Management” of the unnecessary typical Lobby area.
- Less interior abuse as the potential vandal never knows who will be standing outside waiting to enter.

Door

- The door is probably the most abused part of the toilet and needs to be both strong against abuse, while being welcoming to users. Our door has a steel core but will typically be clad in a timber facia to give it a more friendly aspect.
- Quad hinged, with recessed closure system.
- Multiple lock system can completely lock down toilet when out of use
- The door can incorporate an opaque glazed porthole to bring more natural light into the cubicle.

No Touch

- All controls within the toilet are either “no-Touch” proximity switches, (flush, hand wash, drier) or (where “no-touch” is not suitable) we use Vandal resistant “Train” buttons which can pressed, kicked, elbowed or kneed to operate.

Environment

- The toilet will only be heated and lit when in use. A background temperature is maintained when out of use.
- Cleaning is only required in the cubicle and exterior door, saving significantly on consumables use.

Design

- Our Interiors are designed to be highly attractive, while being resistant to vandalism. We use a minimal amount of stainless steel, preferring solid surface materials and hardened tiles and laminates.
- Cladding and roofline can be designed to fit into local environment. Pricing assumes a brick or stone cladding with a Decra Tile roof.

Semi-Automatic Cubicle Specification

Dimensions

- DDA Cubicle 2.2m * 1.5m

Materials

- Cubicle Lined full height in hardened tiles
- Non Slip Quarry Floor Tiles
- Roof in Trespa or equivalent
- Full Cubicle width 'Blucher' channel at rear
- High security door, stainless steel
- Hardened glass porthole in doors to provide natural light (optional)

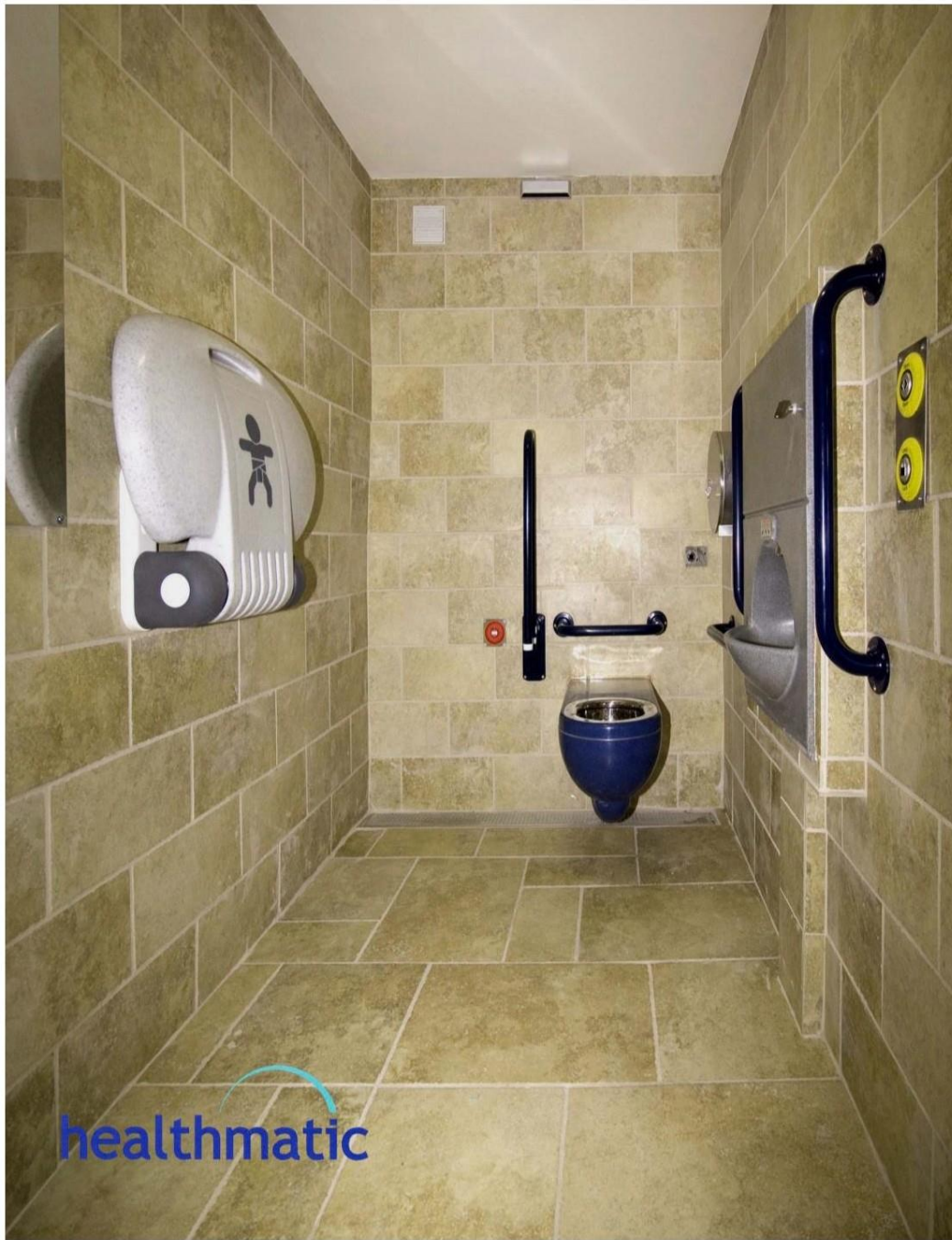
Specification

- Coinplate, with access control and service light indicators
- Toilet Bowl - Steel with Laminate seat
- Wallgate hand washing unit
- No-Touch toilet flush sensor
- Automatic (back up) toilet flush on user exit (if not flushed manually)
- High specification baby change facilities
- Toilet paper dispenser in stainless steel (optional- recessed in service area)
- Stainless steel mirror
- Two stainless steel coat hooks per cubicle
- Stainless Steel Recessed Sanitary & Rubbish Bin (Optional)
- Recessed Sharps bin (optional)
- Automatic ventilation systems
- Door open and lock buttons by AEO (Led Illuminated) including Braille
- External Lighting & Signage

Management Systems

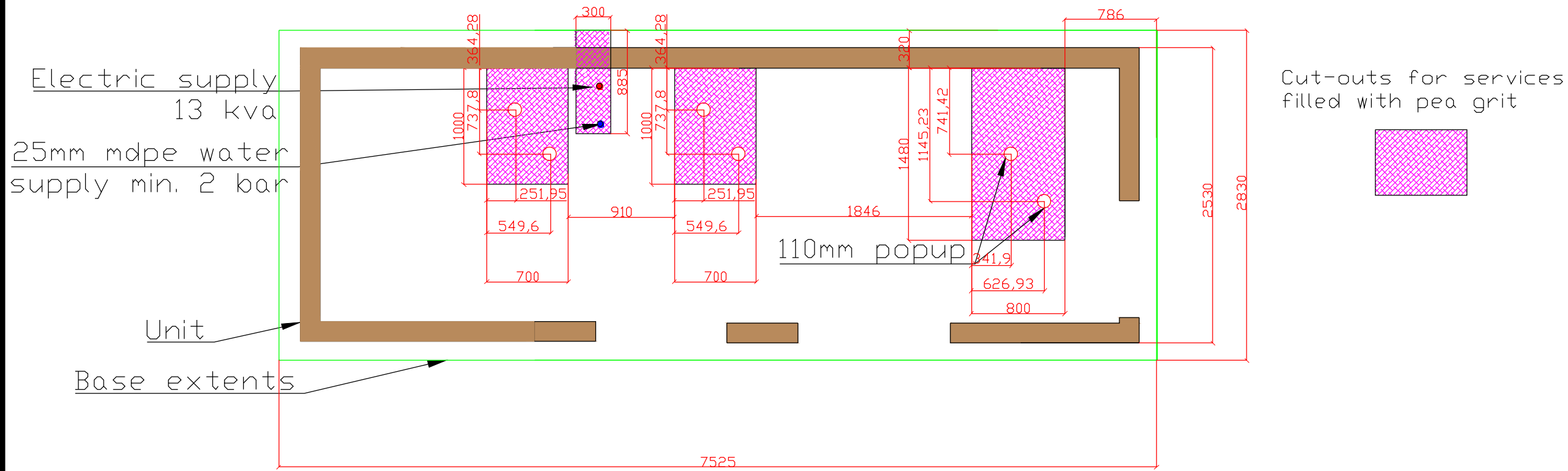
- Definable open/closed periods for each cubicle
- Computer controlled operation to allow up to 15 mins usage
- Usage counter for coins & Radar entry
- Automatic heating during use
- Automatic lighting 150 lux min at Floor level on entry
- Emergency lighting in the event of power failure
- External coin plate indicating 'in service', 'vacant' or 'out of service'
- Validator coin system capable of managing different denominations
- Two emergency exit buttons by AEO with Alarm

The interior of a typical Healthmatic Semi Automatic Cubicle

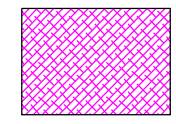


Example Basic Exteriors of semi-automatic toilets

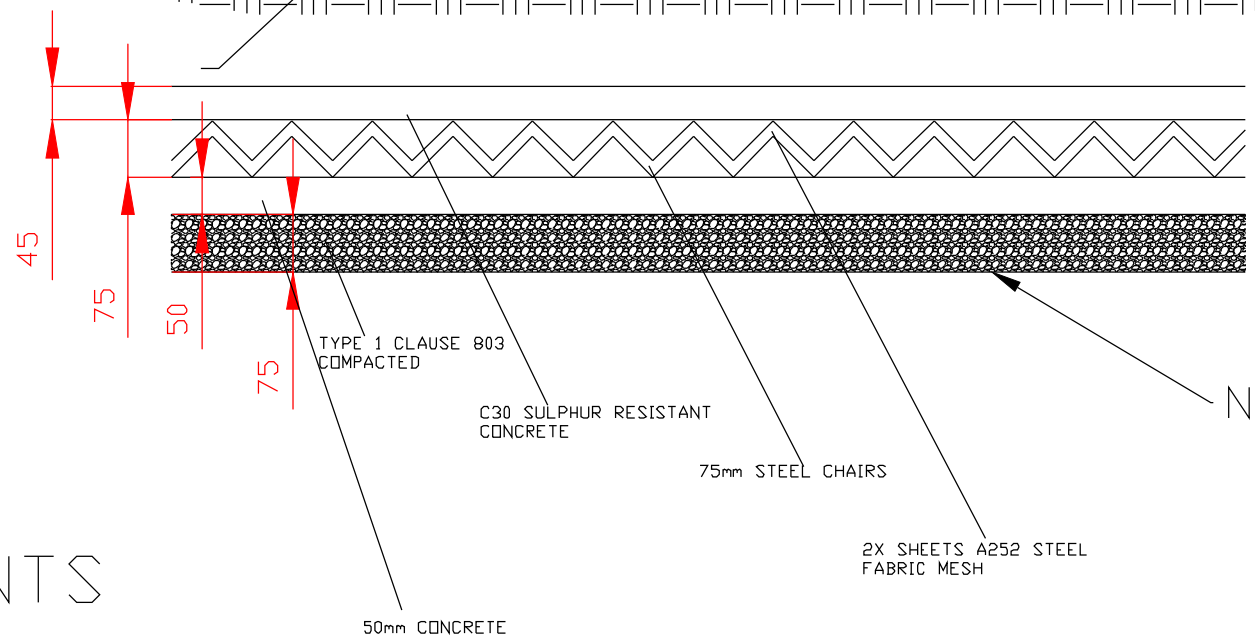
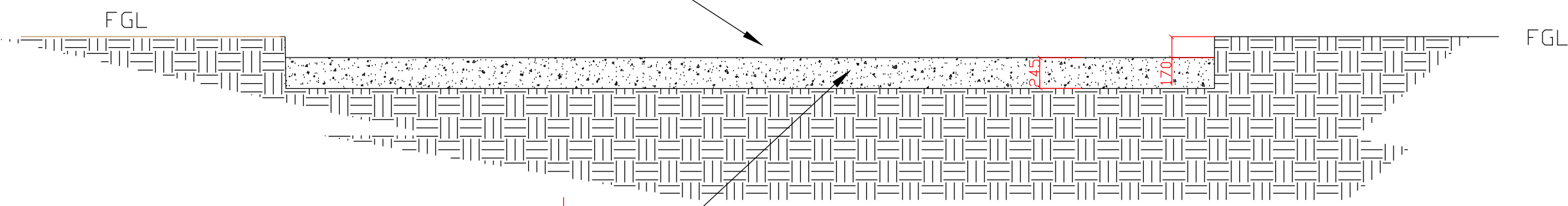




Cut-outs for services filled with pea grit



Base 170mm below FGL



NOT TO SCALE

BASE REQUIREMENTS

CONT. APPROVED BY	DATE
ELECT. APPROVED BY	DATE
HM. APPROVED BY	DATE

REV	DATE	DESCRIPTION

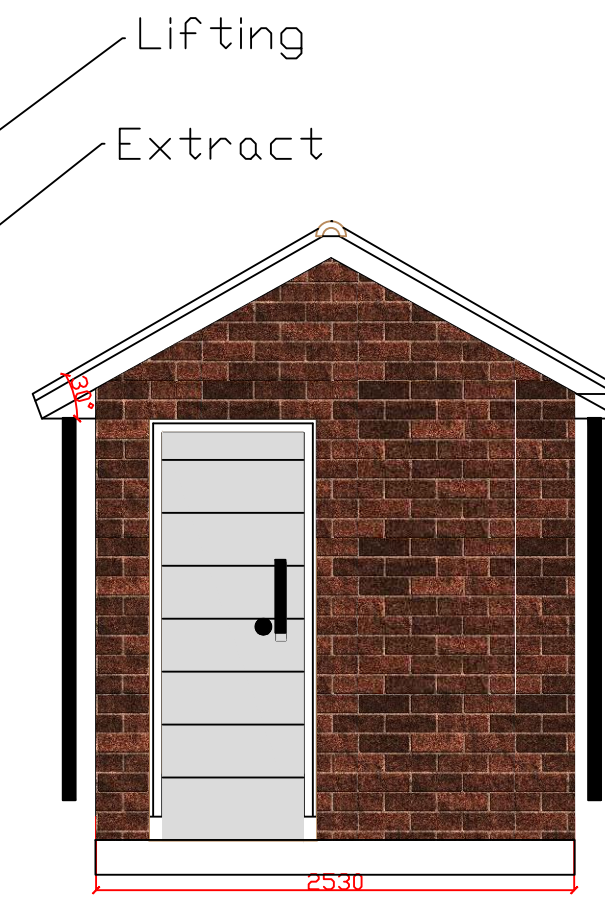
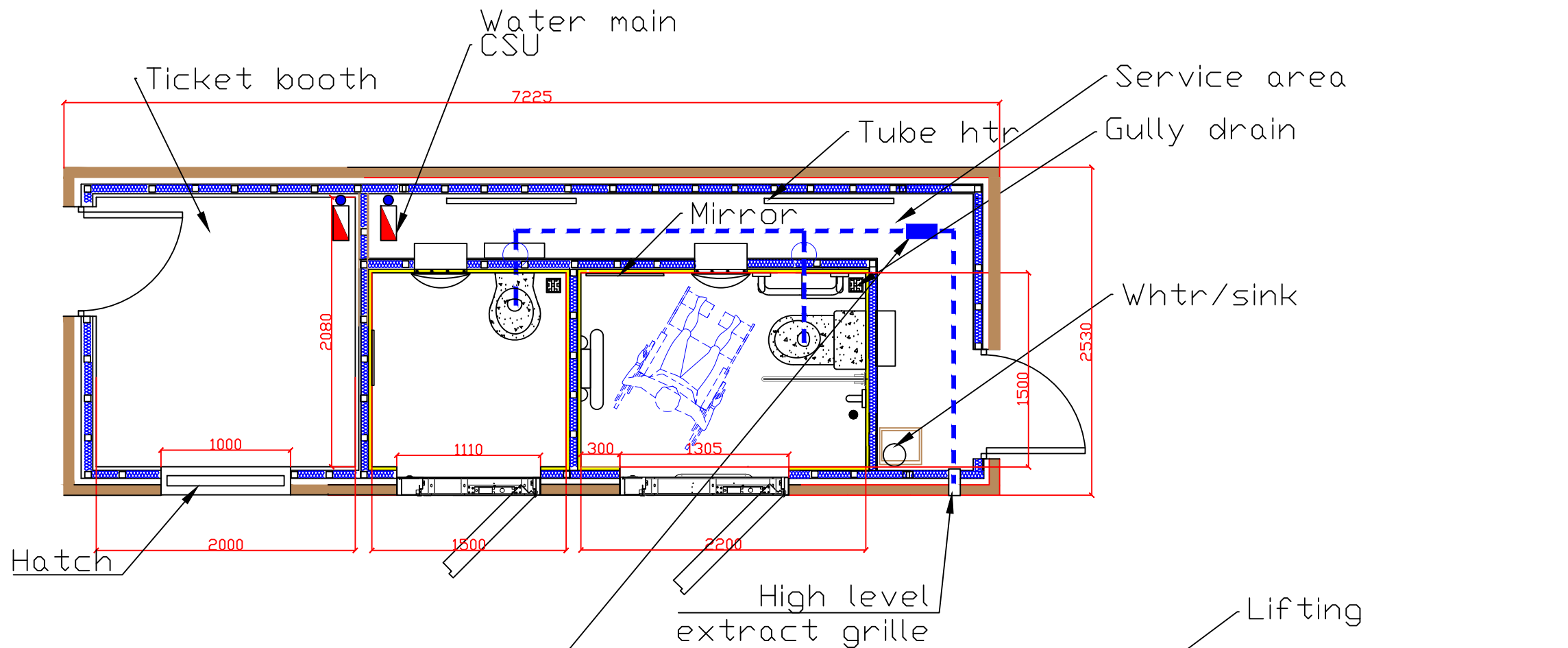
CLIENT
DACORUM BOROUGH COUNCIL

DRAWING TITLE
HEMEL HEMPSTEAD

SCALE	DATE	DRAWN BY	CHECKED BY
1:40	MAY-2014	B W DAVIES	

healthmatic
SMARTER PUBLIC CONVENIENCES
REDMAN ROAD
PORTE MARSH IND. ESTATE
CALNE
WILTS
SNIL 9PR
Tel: 01249 822063
Fax: 01249 823140
e-mail ops@healthmatic.com

DRAWING NUMBER	REVISION
HM-DBC-HH-06	

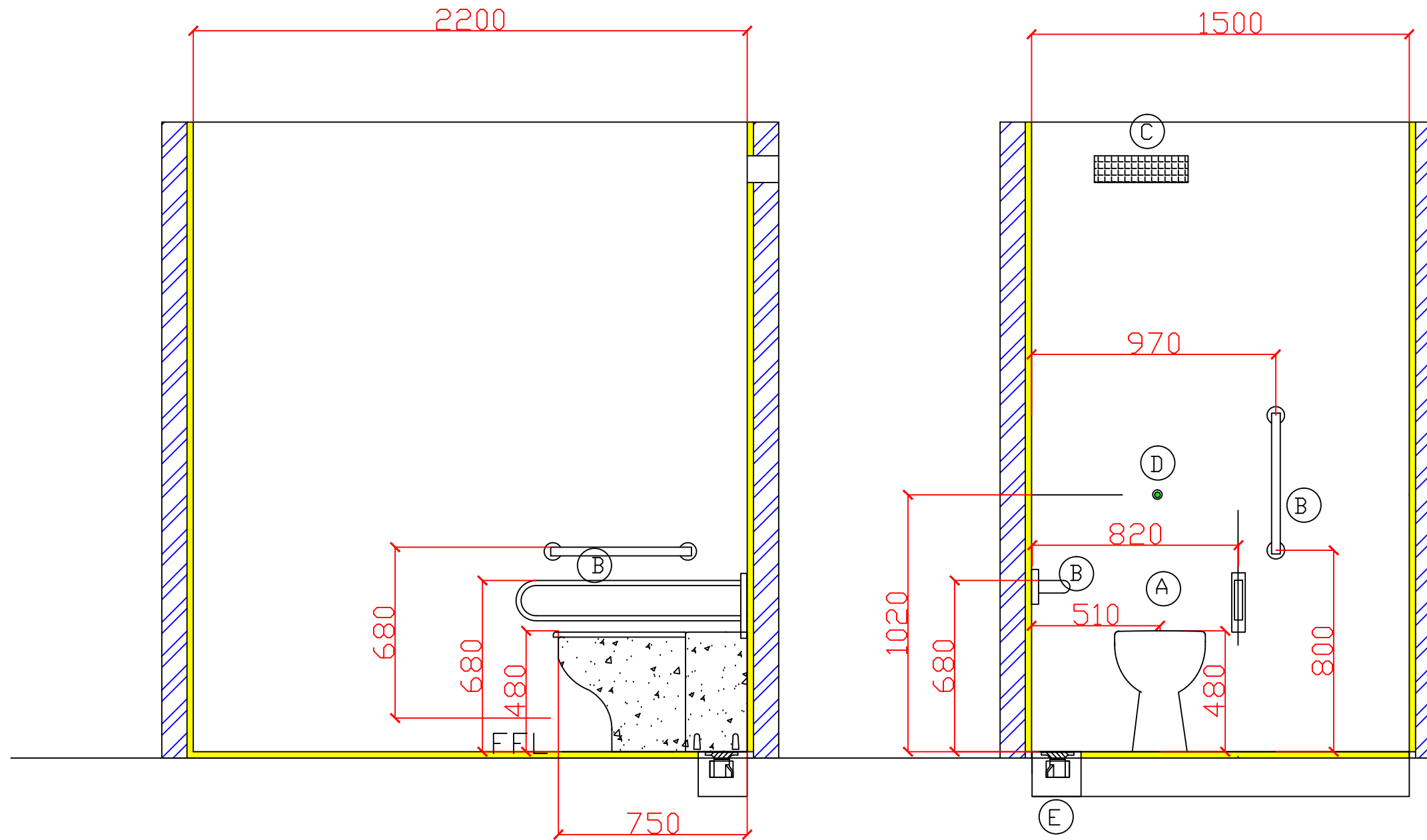


1x DISABLED SEMI-AUTO TO DDA
 1x UNISEX SEMI-AUTO
 1x TICKET BOOTH

RIGHT ELEVATION &
 LEFT ELEVATION

CONT. APPROVED BY		DATE	
ELECT. APPROVED BY		DATE	
HM. APPROVED BY		DATE	
REV	DATE	DESCRIPTION	
CLIENT			
DACORUM BOROUGH COUNCIL			
DRAWING TITLE			
HEMEL HEMPSTEAD			
SCALE	DATE	DRAWN BY	CHECKED BY
1:40	May-2014	B W DAVIES	
@A3			
<small>REDMAN ROAD PORTE MARSH IND. ESTATE CALNE WILTS SN11 9PR</small>		<small>Tel: 01249 822063 Fax: 01249 823140 e-mail ops@healthmatic.com</small>	
DRAWING NUMBER		REVISION	
HM-DBC-HH-07			

- A Disabled pan
- B Doc M pack
- C Extract vent
- D Flush sensor
- E Floor gully



CONT. APPROVED BY	DATE
ELECT. APPROVED BY	DATE
HM. APPROVED BY	DATE

REV	DATE	DESCRIPTION

CLIENT

DACORUM
BOROUGH COUNCIL

DRAWING TITLE

HEMEL HEMPSTEAD

SCALE	DATE	DRAWN BY	CHECKED BY
@A3	MAY-2014	B W DAVIES	

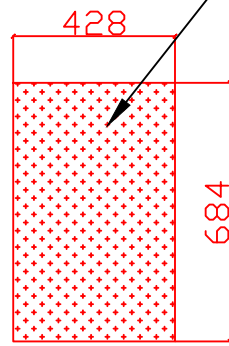
healthmatic
SMARTER PUBLIC CONVENIENCES

REDMAN ROAD
PORTE MARSH IND. ESTATE
CALNE
WILTS
SN11 9PR

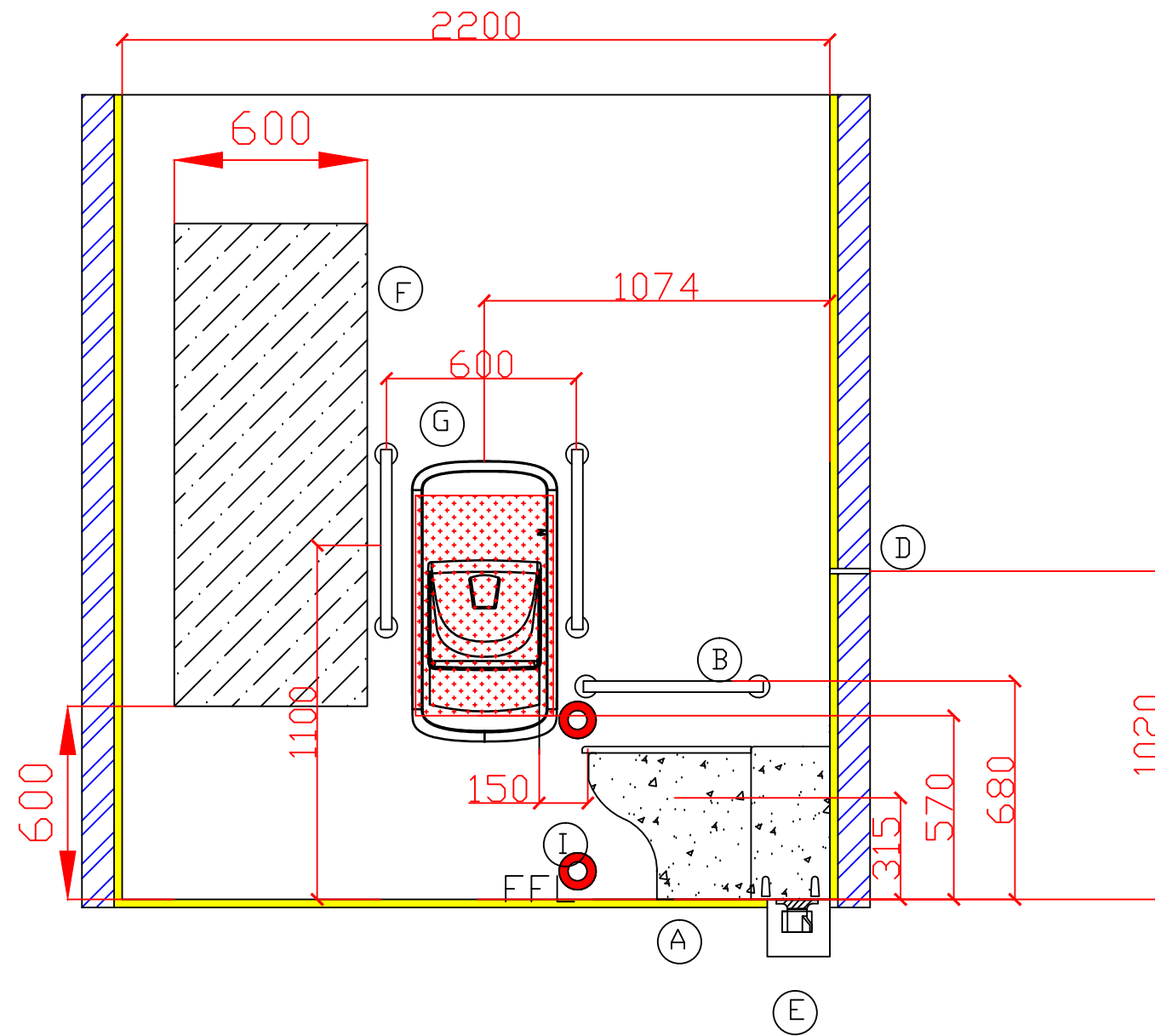
Tel: 01249 822063
Fax: 01249 823140
e-mail ops@healthmatic.com

DRAWING NUMBER	REVISION
HM-DBC-HH-08	

Hand wash aperture



- A Disabled pan
- B Doc M pack
- D Flush sensor
- E Floor gully
- F Mirror
- G Hand wash/dryer
- I SDS buttons



CONT. APPROVED BY	DATE
ELECT. APPROVED BY	DATE
HM. APPROVED BY	DATE

REV	DATE	DESCRIPTION

CLIENT

DACORUM
BOROUGH COUNCIL

DRAWING TITLE

HEMEL HEMPSTEAD

SCALE	DATE	DRAWN BY	CHECKED BY
1:20	May-2014	B W DAVIES	

@A3

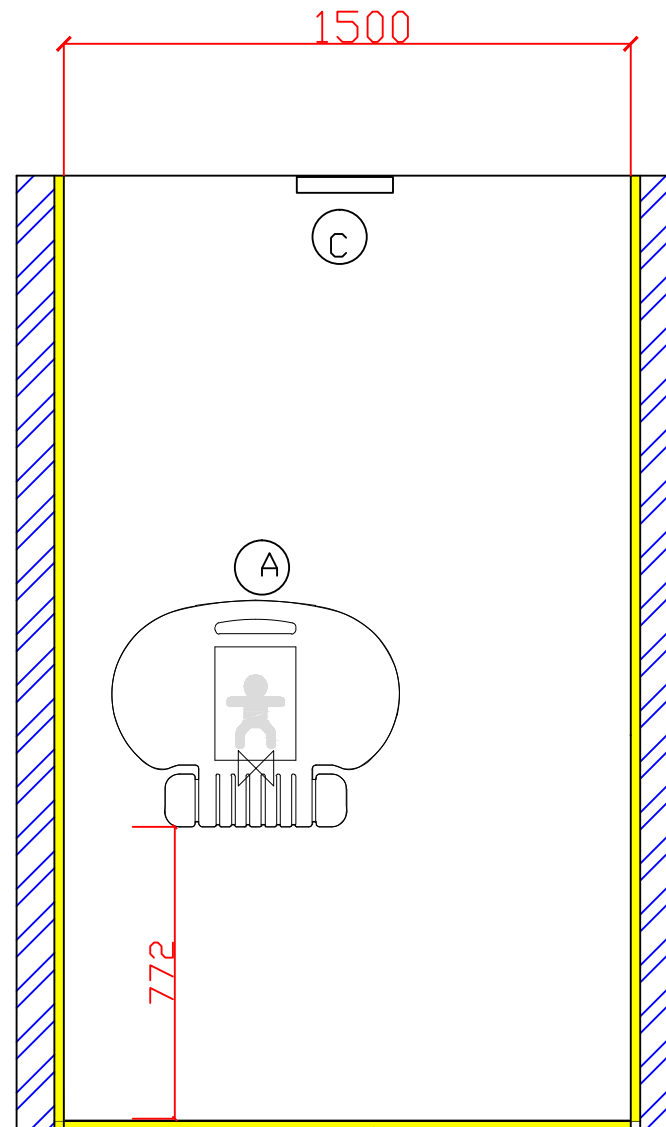
healthmatic
SMARTER PUBLIC CONVENIENCES

REDMAN ROAD
PORTE MARSH IND. ESTATE
CALNE
WILTS
SN11 9PR

Tel: 01249 822063
Fax: 01249 823140
e-mail ops@healthmatic.com

DRAWING NUMBER	REVISION
HM-DBC-HH-09	

- A Baby change
- C Person sensor



CONT. APPROVED BY	DATE
ELECT. APPROVED BY	DATE
HM. APPROVED BY	DATE

REV	DATE	DESCRIPTION

CLIENT


DACORUM
BOROUGH COUNCIL

DRAWING TITLE

HEMEL HEMPSTEAD

SCALE	DATE	DRAWN BY	CHECKED BY
1:20	MAY-2014	B W DAVIES	

@A3



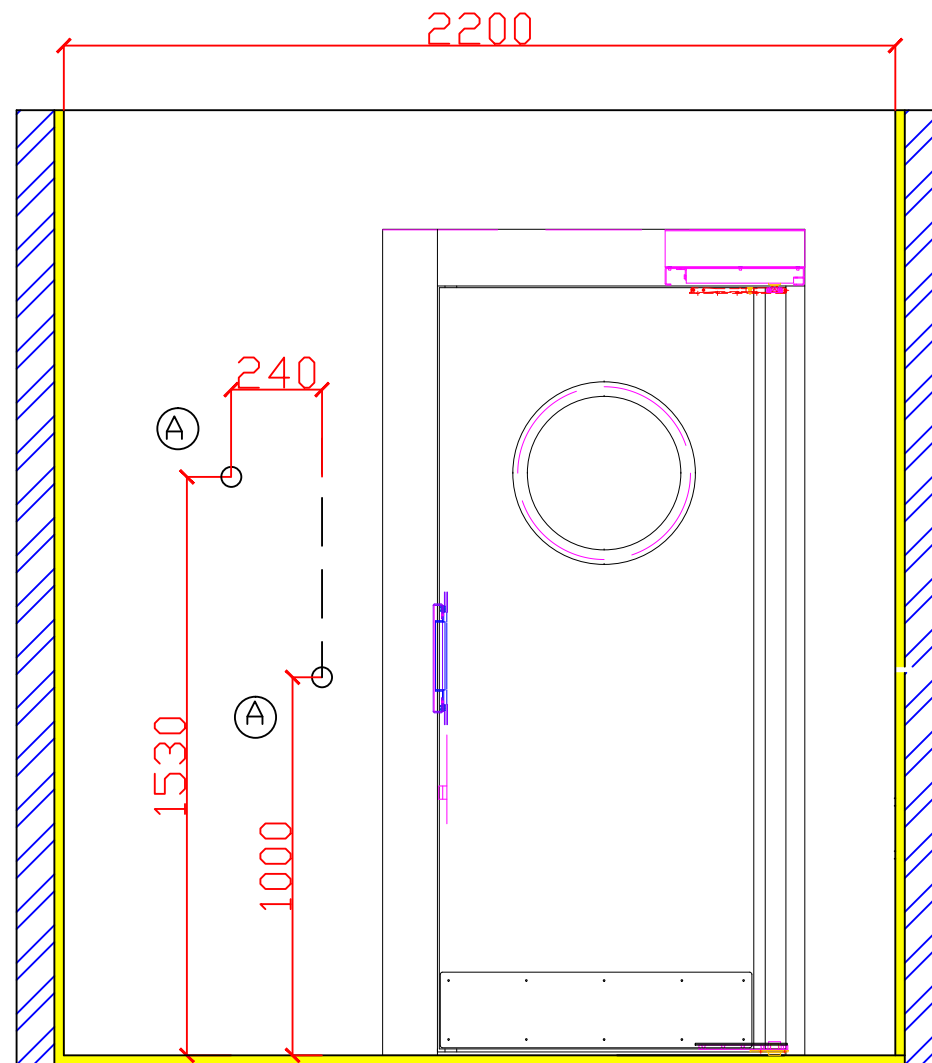
healthmatic
SMARTER PUBLIC CONVENIENCES

REDMAN ROAD
PORTE MARSH IND. ESTATE
CALNE
WILTS
SN11 9PR

Tel: 01249 822063
Fax: 01249 823140
e-mail ops@healthmatic.com

DRAWING NUMBER	REVISION
HM-DBC-HH-10	

A Coat hooks



CONT. APPROVED BY	DATE
ELECT. APPROVED BY	DATE
HM. APPROVED BY	DATE

REV	DATE	DESCRIPTION

CLIENT

DACORUM
BOROUGH COUNCIL

DRAWING TITLE

HEMEL HEMPSTEAD

SCALE	DATE	DRAWN BY	CHECKED BY
1:20	MAY-2014	B W DAVIES	

@A3



healthmatic
SMARTER PUBLIC CONVENIENCES

REDMAN ROAD
PORTE MARSH IND. ESTATE
CALNE
WILTS
SN11 9PR

Tel: 01249 822063
Fax: 01249 823140
e-mail ops@healthmatic.com

DRAWING NUMBER	REVISION
HM-DBC-HH-11	

How much space am I entitled to at work?

Regulation 10 of the Workplace, (Health Safety and Welfare) Regulations 1992 states the following with regards to room dimensions and space requirements:

Every room where persons work shall have sufficient floor area, height and unoccupied space for purposes of health, safety and welfare.

The associated Approved Code of Practice and Guidance goes on to state:

Workrooms should have enough free space to allow people to get to and from workstations and to move within the room, with ease. The number of people who may work in any particular room at any one time will depend not only on the size of the room, but on the space taken up by furniture, fittings, equipment, and on the layout of the room. Workrooms, except those where people only work for short periods, should be of sufficient height (from floor to ceiling) over most of the room to enable safe access to workstations. In older buildings with obstructions such as low beams the obstruction should be clearly marked.

The total volume of the room, when empty, divided by the number of people normally working in it should be at least 11 cubic metres. In making this calculation a room or part of a room which is more than 3.0m high should be counted as 3.0m high. The figure of 11 cubic metres per person is a minimum and may be insufficient if, for example, much of the room is taken up by furniture etc.

The figure of 11 cubic metres does not apply to:


1. retail sales kiosks, attendants' shelters, machine control cabs or similar small structures, where space is necessarily limited; or
2. rooms being used for lectures, meetings and similar purposes.

In a typical room, where the ceiling is 2.4m high, a floor area of 4.6m² (for example 2.0 x 2.3m) will be needed to provide a space of 11 cubic metres. Where the ceiling is 3.0m high or higher the minimum floor area will be 3.7m² (for example 2.0 x 1.85m). (These floor areas are only for illustrative purposes and are approximate).

The floor space per person indicated above will not always give sufficient unoccupied space, as required by the Regulation. Rooms may need to be larger, or to have fewer people working in them, than indicated in those paragraphs, depending on such factors as the contents and layout of the room and the nature of the work. Where space is limited careful planning of the workplace is particularly important.

Reference

[L24: Workplace Health, Safety and Welfare Regulations 1992: Approved Code of Practice^{\[1\]}](#), ISBN 9780717604135, priced at £5.75.

REV	DATE	DESCRIPTION	
CLIENT			
DACORUM BOROUGH COUNCIL			
DRAWING TITLE			
HEMEL HEMPSTEAD			
SCALE	DATE	DRAWN BY	CHECKED BY
	MAY-2014	B W DAVIES	
@A3			
			
REDMAN ROAD PORTE MARSH IND. ESTATE CALNE WILTS SN11 9PR			
Tel: 01249 822063 Fax: 01249 823140 e-mail ops@healthmatic.com			
DRAWING NUMBER			REVISION
HM-DBC-HH-12			