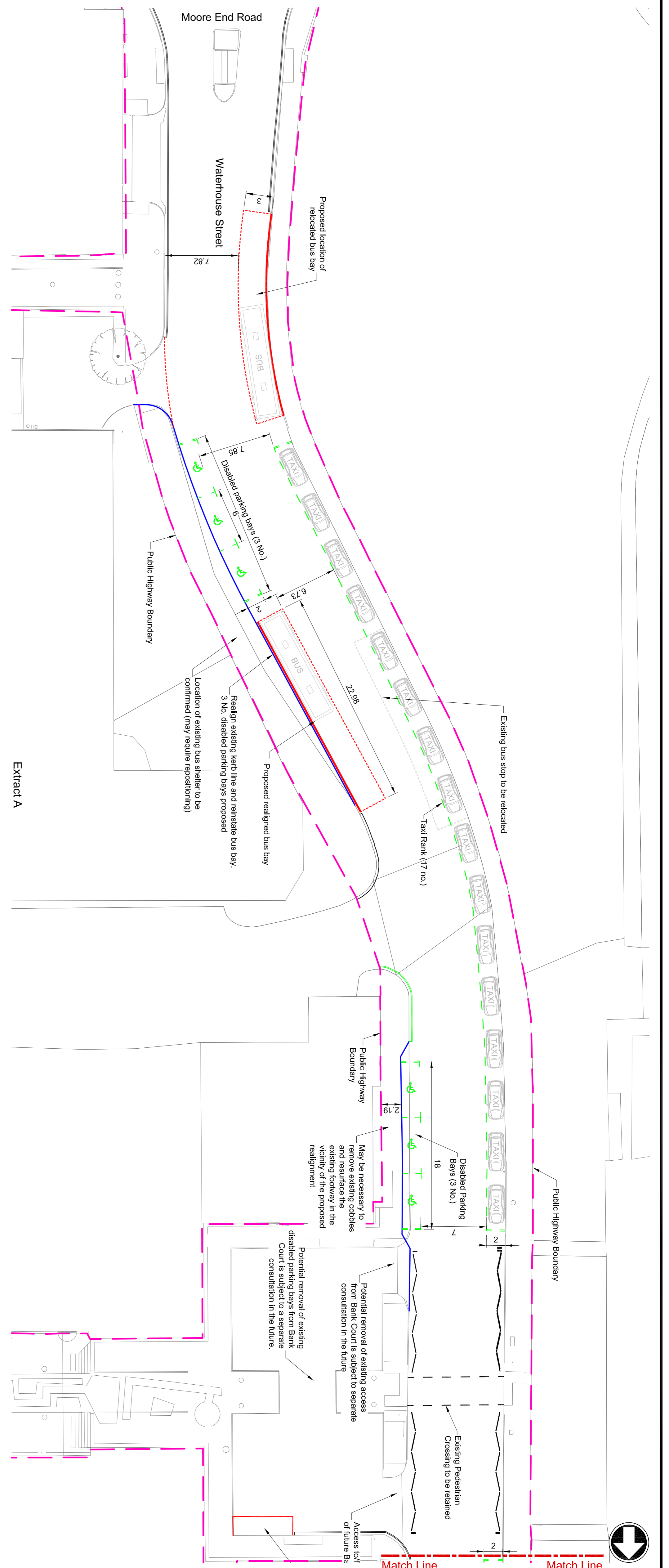


- Notes
- Do not scale from this drawing.
 - All dimensions unless otherwise shown. All levels are in metres above Ordnance Datum (AOD). All dimensions & levels should be checked on site.
 - Any drawing errors or discrepancies should be brought to the attention of Mott MacDonald at the address shown in the title block.
 - The information provided are based on OS Mapping and are subject to change at detail design.
 - All design to be in accordance with the Hertfordshire County Council's design guidance - Roads in Hertfordshire - Highway Design Guide 3rd Edition.
 - Parking bay dimensions are in accordance with the Manual for Streets:
 1. Standard Parallel Parking Bays 2.0m x 5.0m
 2. Disabled Parallel Parking Bays 4.5m x 5.0m (incl. 1.2m hatched markings)
 3. Taxi spaces 2.0m x 5.5m (as suggested by Deccorum Borough Council Licensing)
 7. Proposed Parking: 37 No. Taxi rank spaces (southern end of Waterhouse St) 12 No. Disabled stay parking bays 2 No. Short stay parking bays (south of Bridge Street on Waterhouse street)
 - Bank Court: All parking except motorcycle parking, removed
 - It is assumed that taxi will depart from the head of the queue
 - Proposed shared occupancy cycle route to be signed with 'Way finding' signage.

Location Plan

Note:
A proposal for shared occupancy cycle route to be agreed by local authority and Mott MacDonald



Rev	Date	Drawn	Description	CHK'd	App'd
P1	25.11.2013	LF	Preliminary Issue	DR	-

Mott MacDonald

Demer House
Station Road
Cambridge, CB1 3JH
United Kingdom
T +44 (0)1223 463 800
F +44 (0)1223 463 807
M www.mottmac.com

Client:
Broadway Malyan

This
**HCA Hemel Bus Interchange
Waterhouse Street
Traffic Regulation Order Consultation
Parking Strategy**

Designed	L February	LF	Eng check	D Redfiall	DR
Drawn	L W Russell	LWR	Coordination	L February	LF
Dwg check	D Redfiall	DR	Approved	A W Rawlings	AW

Scale at A1
1:250

Drawing Number
PRE

Status
PRE

Rev
P1

Drawing Number
MMD-324961-C-SK-00-XX-0526